



Rescue Helicopter Flight Guide

Gisborne Base

Flight Operations Instruction – 123

ieX FOI V1.2 1 Oct 12

Contents:

Cover Page

1. Amendments
2. Contents
3. Contents Cont.
4. Phone No.s
5. DZM Speed dial No.s
6. Aviation Radio/Nav aids Frequencies
7. Fiscom Chart
8. Tait Radio Ambulance
9. Tait Radio Police
10. Tait Radio Marine, Fire, DOC, CD, GDC
11. Tait Radio Forestry
12. GPS Routes/MSA's - Stretcher weight limit
13. RCCNZ Mission Info
14. Fuel Cache (Ruatoria) / SAR operations
15. Common Gisborne GPS Waypoints
16. Forestry Company Contact Details
17. Forestry Emergency Landing Points
18. Forestry Emergency Landing Points
19. Forestry Emergency Landing Points
20. Forestry Emergency Landing Points
21. Forestry Emergency Landing Points
22. Forestry Emergency Landing Points
23. Forestry Emergency Landing Points
24. Forestry Emergency Landing Points
25. Forestry Emergency Landing Points
26. Forestry Emergency Landing Points
27. Forestry Emergency Landing Points
28. East Coast School GPS Locations
29. Station Locations
30. Station Locations
31. Station Locations
32. Station Locations

33. Station Locations
34. Station Locations
35. Gisborne Hospital Landing Plate
36. Gisborne Hospital Landing Plate
37. Waikato Hospital Landing Plate
38. Waikato Hospital Landing Plate
39. Hastings Hospital Landing Plate
40. Hastings Hospital Landing Plate
41. Rotorua Hospital Landing Plate
42. Rotorua Hospital Landing Plate
43. Tauranga Hospital Landing Plate
44. Tauranga Hospital Landing Plate
45. Wairoa Hospital Landing Plate
46. Wairoa Hospital Landing Plate
47. Whakatane Hospital Landing Plate
48. Whakatane Hospital Landing Plate
49. Pakihi Track Hut Landing Plate
50. Nuhaka School Landing Plate
51. Ruatoria Landing Plate
52. Te Araroa Landing Plate
53. Te Kaha Landing Plate
54. Te Puia Springs Landing Plate
55. Tuai PALLPAD Landing Plate
56. Waihou Bay Landing Plate
57. Mahia RALLPAD Landing Plate
58. Night Operations Check List
59. Topo 50 Map Reference

Phone Numbers:

Ambulance: 0800 244 111
D/Dial number: 09 579 4187

Coastguard:

Maritime Ops: 04 914 5642
Radio Room: 06 867 1027
Rescue Vessel: 021 298 4545

Police:

Gisborne: 06 869 0205
Wayne Beattie 027 667 7731
Napier: 06 831 0700
SAR: 06 869 0207

NZRCC: 0508 472269
04 914 8380

Gisborne Tower: 06 867 1223
Napier Tower: 06 835 7584

Gisborne Hospital: 06 869 0500
Hastings Hospital: 06 878 1633
Wairoa Hospital: 06 838 7099
Waikato Hospital: 07 839 8899
Rotorua Hospital 07 348 1199

EMS Helicopters:

Palmerston nth: 06 350 8014
Wellington: 04 387 2743
Hamilton: 07 839 8869
Auckland: 09 309 6893
Taupo: 07 378 8074
Gisborne: 06 863 2300

NBO: 0900 626756

DZM Speed Dials:

To make speed dial call:

Press **2** (speed cell) or **3** (speed sat)

Press assigned number **1-9**

Press **Enter** (connect)

- | | | |
|----|------------------------|----------------|
| 1. | Ambulance control Sat | 00644 472 2999 |
| 2. | Ambulance control Cell | 0800262266 |
| 3. | RCC Sat | 006449148380 |
| 4. | RCC Cell | 0508472269 |
| 5. | Gisborne Police Sat | 006468690205 |
| 6. | Gisborne Police Cell | 068690205 |
| 7. | NBO Cell | 0900626756 |
| 8. | Rob Mudgeway | 021 768 750 |
| 9. | Brent Williams Cell | 0274426524 |

To make phone call:

Press **5** (dial Cell) or **6** (dial sat)

Enter phone no. - Sat calls enter country code

Press **Enter** (Connect) to start call

End call press **8** (end Cell) or **9** (end sat)

Aviation Radios and Nav Aids:

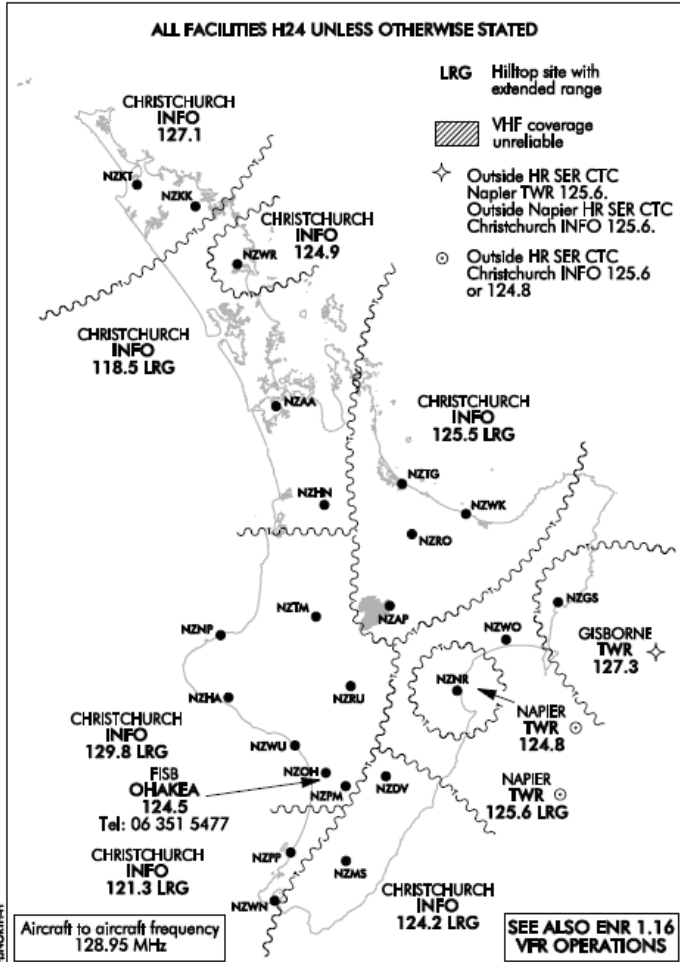
Station:	Atis:	Twr:	Area:	VOR/DME:	ADF:
AA Auckland Int	127.80	118.70	124.3 AA	114.80	
AK City Auckland area	-	120.40	124.3 AA		
AP Taupo	125.20	118.40	119.5 CH Info	-	230
AR Ardmore	121.0	118.1	124.3 AA	-	-
GS Gisborne	126.40	127.30	127.3 Off 125.6 NR 125.5 CH Info	114.20	
HN Hamilton	128.60	122.90	125.3 CH Info	114.00	390
HS Hastings	132.95	125.8	129.9 NR Twr 125.6	-	-
NR Napier	128.00	124.80 Off 118.10	124.8 NR Twr 125.6	113.80	
PN Palmerston	129.70	120.60	123.7 CH Info	113.40	258
PP Paraparaumu	128.40	118.30	122.3 WN	117.30 DME Only	242
RO Rotorua	128.8	121.2	125.5 CH Info	112.1	282
TG Tauranga	126.6	118.3	125.5 CH Info	-	304
WK Whakatane	-	118.6	125.5 CH Info	-	362
WN Wellington	126.90	118.80	122.3 CH Info	112.30	298
WO Wairoa	-	119.10	125.6 NR Twr	-	246

FISCOM Chart

AIP New Zealand

GEN 3.4 - 17

Figure GEN 3.4-2
North Island FIS COM Chart



Changes from 8 APR 10: High density tourist area removed.

***FISCOM Chart Above Example Only
Check AIP for latest issue***

Tait Ambulance Radio Channels:

Ambulance:

Scan Groups: **Auckland** **Midlands** **Central**

#	CH name:	#	CH name:
007	KAI/WAI	043	REWA
008	NTH COMD	044	RG4 ES27
009	THAM/KKO	045	RG4 ES28
010	TAIRUA	046	ERINGA
011	S AK/RUS	047	CLIMIE
012	W/WORTH	048	RG4 ES31
013	WHNGAREI	049	PUKERUA
014	AK CITY	050	RG4 ES33
015	DARGVLE	051	WSH HILL
016	TORBAY	052	RG4 ES35
017	HSNVILLE	053	RG4 ES36
018	BRNDWYN	054	RG4 ES37
019	PIOPIO	055	CHAN 55
020	TOK-GISB	056	CHAN 56
021	EAST CPE	057	CHAN 57
022	TE KUITI	058	CHAN 58
023	TAUM-TPS	059	CHAN 59
024	ROTORUA	060	CHAN 60
025	RAG-OPOT-HN Hosp	061	CHAN 61
026	REPOROA	062	CHAN 62
027	TAURANGA	063	CHAN 63
028	TAUPO	064	CHAN 64
029	HAMILTON	065	CHAN 65
030	HLY-WHAK	066	CHAN 66
031	WAIROA	067	CHAN 67
032	MARTON	068	CHAN 68
033	PALM NTH	069	CHAN 69
034	PARAPARA	070	CHAN 70
035	TARARUA	071	CHAN 71
036	NAP NTH	072	CHAN 72
037	TAIHAPE	073	CHAN 73
038	NAPIER	074	CHAN 74
039	DESRT RD	075	CHAN 75
040	HORWHEN	076	CHAN 76
041	WAIPUK	077	CHAN 77
042	PORANGAH	078	CHAN 78

Police Channels:

#	ZONES:	#	SCAN GROUPS:
01	VERSION		
02	NORTHLAND	HAWKES BAY	HB CITY
03	AUCKLAND		HB RURAL
04	WAIKATO		FIRE HB
05	BAY OF PLENTY		
06	GISBORNE	GISBORNE	GIS RRL
07	HAWKES BAY		GISBNE
08	TARANAKI		WAIROA
09	WANGANUI		EAST CAPE
10	PALM NORTH		
11	WELLINGTON	BAY OF PLENTY	TAUR-1
12	NELSON		TAUR-2
13	WEST COAST		WHAKATNE
14	CH / CANT		ROT CITY
15	STH-CANT		ROT RURAL
16	DN / OTAGO		TOK TAUPO
17	SOUTHLAND		FIRE TGA
18	SIMPLEX		FIRE ROT
19	SPECIAL OP		TGA RURAL
		PALM NORTH	PNTH-2
			FIRE P/N
			P NTH-1
			LEVIN
		WELLINGTON	MANA-1
			WGTN-1
			HUTT-1
			MASTERTON
			AREA-1
			AREA-2
			FIRE-WN

KEY:

POLICE EXCLUSIVE

(Urban & Rural)

FIRE EXCLUSIVE

(Urban only)

SHARED POLICE / FIRE

(Urban & Rural)

No.2 Tait Radio Channels:

Marine: Marine Emergency channel

# 100	CH name:	#	CH name:
100	Marine	185	MM85 TGB
160	MM60 TAT	116	MMSPX 16
161	MM61 TGB	112	MMSPX 12
162	MM62 NAP	197	Liason
163	MM63 LOT		
183	MM83 NIC		

Fire: Air to Ground during fire operations 134.6 Aviation

# 200	CH name:	#	CH name:
200	Fire	286	FFSPX 86
201	Fire 1	205	FFRPT
284	FFSPX 84	263	FFSPX 83
204	Fire 4		

GDC:

# 600	CH name:	#	CH name:
610	GDC RAU	697	Liason
611	GDC ARO	614	GDC TAT
612	GDC PKA	615	GDC SPX

Civil Defense:

# 400	CH name:	#	CH name:
401	CD TGB	405	CD WPE
402	CD HKB	406	CD GYH
403	CD RAU	416	ESX16 CD
404	CD ARO	439	ESX39 CD

Department of Conservation:

# 500	CH name:	#	CH name:
501	DOC 1	510	DOC 10
502	DOC 2	511	DOC 11
503	DOC 3	512	DOC 12
504	DOC 4	513	DOC 13
505	DOC 5	516	DOC LIAS
506	DOC 6	518	DOC Lias SX
507	DOC 7	597	Liason
508	DOC 8		
509	DOC 9		

Tait Radio Channels (Cont):

Hikurangi Forest Farms:

# 751	CH name:	#	CH name:
751	HFF 1	754	HFF 4
752	HFF 2	755	HFF 5
753	HFF 3		

Juken NZ Ltd:

# 707	CH name:	#	CH name:
708	JNL 8	707	JNL 7
710	JNL 10	709	JNL 9

Ngati Porou Whanui Forests Ltd:

# 717	CH name:	#	CH name:
717	NGATI 17	718	NGATI 18

Ernslaw One:

# 720	CH name:	#	CH name:
722	EOL 22	725	EOL 25
723	EOL 23	726	EOL 26
724	EOL 24		

Forest Management NZ Ltd:

# 741	CH name:	#	CH name:
741	KOHN 1	742	KOHN 2

Olsen's:

# 771	CH name:	#	CH name:
771	OLSN 1	772	OLSN 2

Heli Co. / PWR Co. / SAR / HK Forest

# 900	CH name:	#	CH name:
910	GIS HELI RPT	1020	ENET SX
911	GIS SPX1	1010	ENETWK1
912	GIS SPX2		
300	SAR	800	HK Forest
301	SAR SX1	806	RAY SPX
302	SAR SX2	812	P/P Sim
303	SAR RPT1		
307	SAR 07		

GPS Routes / MSA's:

Start	Route					Dest. (lowest Pass)	Direct MSA
GS	TGB	TOK	TPS	RUA	Te Araroa	Te Araroa	4000
MSA	2500	3500	3500	3500	3500	1500	
GS	Matawai	OP	TG	HN		Hamilton	6000
MSA	5000	4500	2500	4000		2500	
GS	TK	Otoko	Matawai	Te Kaha	Waihou Bay	Waihou Bay	6500
MSA	2500	4500	4500	5000	3500	2500	
GS	Mahia	WO	HS			Hastings	4000
MSA	2500	2500	2500			2000	

Ferno Stretcher
Weight limit
160 Kgs

RCCNZ Mission Information

A. When to contact RCCNZ during a mission

Ops normal every 20 minutes where possible and;

1. Once airborne
2. On scene
3. On initial hearing of the beacon or contact with survivors
4. On location of the beacon source or search area
5. On leaving the search area
6. Upon return to base

B. Information to be collected during a beacon search

1. Make & model of beacon
2. Type of beacon e.g. PLB (personal), EPIRB (marine), ELBA (aviation)
3. Vessel or aircraft identifier
4. Beacon owner & contact details
5. Reason for beacon use

Contact RCCNZ on;

0508 472269 or 04 914 8380

Direction Finding on 121.5 MHZ – Use number 1 radio, Gain full right.

Fuel Cache Ruatoria

S37° 54.192' E178° 18.013'

Key for shipping container is attached to fuel cards, container inside power transformer fenced site. Jet A1 fuels drums inside. Will require bleed air.

SAR Operations Check List

- Laptop
- Hand held radios
- Warm clothing
- Food and drink
- Crew (trained air observers)
- Night / NVG's / Nightsun (trained crew)
- Static Line / helmets
- Life jackets
- Fuel jerries
- Heli radio SAR SPX 1 (Channel 301)

Common GS GPS Waypoints:

GPS LOCATION	LAT	LONG	ALT
BLACK BEACH	S39 04.162	E177 48.770	50 ft
FUEL CACHE Ruatoria	S37 54.192	E178 18.013	
HAWAI	S37 55.000	E177 32.000	50 ft
KAREWA	S37 56.098	E178 13.660	97 ft
KOUTU	S38 02.977	E178 22.585	18 ft
MAHIA	S39 05.538	E177 52.442	50 ft
MIRANDA	S37 11.640	E175 17.900	50 ft
MORERE	S38 58.886	E177 47.463	130 ft
MOTU MX (motocross)	S38 15.500	E177 32.500	2000 ft
MOTU SCHOOL	S38 15.500	E177 32.500	2000 ft
NGATAPA	S38 35.144	E177 47.596	200 ft
OTOKO MX	S38 28.029	E177 40.116	2000 ft
PUKETAWA STN	S38 11.977	E178 03.855	3272 ft
PUKETORO STN	S38 03.200	E178 03.030	200 ft
RUATORIA FIRE STN	S37 53.258	E178 19.146	50 ft
RUKUHIA STN	S37 51.000	E175 18.000	50 ft
SAINTS Vineyard	S38 38.546	E177 53.504	50 ft
STATION RD	S38 24.800	E177 32.950	562 ft
TAMATEA STN	S38 11.476	E178 00.316	3272 ft
TE KAHA	S37 44.723	E177 41.018	50 ft
TE KUMI STN	S37 43.132	E178 01.014	200 ft
TE KARAKA	S38 28.051	E177 51.769	97 ft
TEMPLE VIEW	S37 49.100	E175 13.000	50 ft
TOKATA	S37 37.226	E178 19.463	18 ft
TOKOMARU BAY	S38 07.826	E178 18.893	760 ft
TRAFFIDS HILL	S38 21.490	E177 27.480	17 ft
TUAI	S38 48.830	E177 08.930	35 ft
TUTIRA	S39 12.447	E176 52.817	328 ft
WAIHAU BAY	S37 37.108	E177 54.408	50 ft
WAIPAOA STN	S38 17.143	E177 51.160	200 ft
WAIPIRO STN	S38 01.984	E178 21.476	18 ft
WHAHANARUA BAY	S37 40.755	E177 47.737	200 ft
WHANGARA B5 STN	S38 32.790	E178 13.615	119 ft
WHITMORE Vineyard	S38 32.590	E177 55.498	200 ft

FORESTRY:

Contact Details			
Company	Contact	Phone	Mobile
Eastland Wood Council	Peter Farley	06 863 3364	
Ernslaw One	Pat Malloy	06 8680087	027 2704 876
Forest Enterprises	Julian Kohn	06 8685894	0274 908511
Forest Management	Nathan Wallace	06 8630981	
Hikurangi Forest Farms	Paul Ainsworth	06 8679799	
Juken NZ Ltd	Sheldon Drummond	06 869 1100	021 738 496
Kohntrol Forestry	Julian Kohn	06 868 5894	0274 908511
Ngati Porou Whanui	John Kopua	06 864 8362	0274 350 168
PF Olsens	Nick Bunting	06 868 5426	021 466 873

Forestry Emergency Landing Points:

Ernslaw One				
Ident	Radio Ch	Lat	Long	Alt
ERN 01	C26	S37 40.569	E178 16.010	249 ft
ERN 02	C26	S37 43.036	E178 16.670	371 ft
ERN 03	C26	S37 43.036	E178 16.670	371 ft
ERN 04	C26	S37 45.660	E178 15.573	1637 ft
ERN 05	C26	S37 46.019	E178 21.702	689 ft
ERN 06	C26	S37 47.599	E178 14.271	646 ft
ERN 07	C26	S37 47.599	E178 14.271	646 ft
ERN 08	C25	S37 50.513	E178 14.675	1499 ft
ERN 09	C25	S37 50.998	E178 02.960	1667 ft
ERN 10	C25	S37 50.998	E178 02.960	1667 ft
ERN 11	C25	S37 55.674	E178 12.516	394 ft
ERN 12	C25	S37 55.674	E178 12.516	394 ft
ERN 13	C25	S37 55.674	E178 12.516	394 ft
ERN 14	C23	S38 00.780	E178 14.873	1037 ft
ERN 15	C23	S38 04.830	E177 56.778	2795 ft
ERN 16	C23	S38 04.830	E177 56.778	2795 ft
ERN 17	C23	S38 03.202	E178 05.668	1791 ft
ERN 18	C23	S38 03.527	E178 02.296	2211 ft
ERN 19	C23	S38 04.434	E178 09.217	1375 ft
ERN 20	C23	S38 01.620	E178 08.662	1818 ft
ERN 21	C23	S38 06.325	E178 02.572	1699 ft
ERN 22	C23	S38 07.616	E178 08.067	1795 ft
ERN 23	C22	S38 16.812	E177 51.055	541 ft
ERN 24	C22	S38 16.812	E177 51.055	541 ft

MANGATU HQ	C22	S38 16.804	E177 51.050	2000 ft
-----------------------	------------	-------------------	--------------------	----------------

Forestry Emergency Landing Points (Cont):

Forest Enterprises Ltd

Ident	Radio Ch	Lat	Long	Alt
FEL 01	C1 FFSPX63	S38 48.836	E177 46.755	1181 ft
FEL 02	C1 FFSPX63	S38 18.907	E177 59.006	1575 ft
FEL 03	C1 FFSPX63	S38 32.816	E178 02.120	197 ft
FEL 04	C1 FFSPX63	S38 45.261	E177 42.052	1969 ft
FEL 05	C1 FFSPX63	S38 40.787	E177 41.699	1050 ft
FEL 06	C1 FFSPX63	S38 47.157	E177 46.528	394 ft
FEL 07	C1 FFSPX63	S38 20.757	E178 00.120	1115 ft
FEL 08	C1 FFSPX63	S38 49.506	E177 45.359	1312 ft
FEL 09	C1 FFSPX63	S38 20.831	E178 03.564	1411 ft
FEL 10	C1 FFSPX63	S38 46.151	E177 48.374	197 ft
FEL 11	C1 FFSPX63	S38 34.463	E178 02.412	131 ft
FEL 12	C1 FFSPX63	S38 28.389	E177 57.655	262 ft
FEL 13	C1 FFSPX63	S38 27.191	E178 10.311	1050 ft
FEL 14	C1 FFSPX63	S38 27.895	E177 54.161	131 ft
FEL 15	C1 FFSPX63	S38 42.171	E177 44.831	1214 ft
FEL 16	C1 FFSPX63	S38 33.156	E178 02.287	131 ft
FEL 17	C1 FFSPX63	S38 32.396	E177 57.706	98 ft

Forestry Emergency Landing Points (Cont):

Forest Management NZ Ltd					
Ident	Radio Ch		Lat	Long	Alt
FMNZ01	C8	FFSPX63	S38 51.140	E177 27.380	886 ft
FMNZ02	C8	FFSPX63	S38 02.191	E178 11.805	1280 ft
FMNZ03	C8	FFSPX63	S38 58.705	E177 47.251	164 ft
FMNZ04	C8	FFSPX63	S38 49.908	E177 29.685	394 ft
FMNZ05	C8	FFSPX63	S38 35.311	E177 41.851	1312 ft
FMNZ06	C8	FFSPX63	S38 59.310	E177 31.681	328 ft
FMNZ07	C8	FFSPX63	S38 40.328	E177 32.693	1640 ft
FMNZ08	C8	FFSPX63	S38 33.793	E177 42.821	984 ft
FMNZ09	C8	FFSPX63	S38 40.018	E177 32.513	1673 ft
FMNZ10	C8	FFSPX63	S38 41.176	E177 43.010	1247 ft
FMNZ11	C8	FFSPX63	S38 42.520	E177 45.530	984 ft
FMNZ12	C8	FFSPX63	S38 41.131	E177 31.966	1083 ft
FMNZ13	C8	FFSPX63	S38 49.796	E177 27.471	1345 ft
FMNZ14	C8	FFSPX63	S38 34.085	E177 43.383	1312 ft
FMNZ15	C8	FFSPX63	S39 00.845	E177 28.276	33 ft
FMNZ16	C8	FFSPX63	S38 40.778	E177 32.866	1575 ft
FMNZ17	C8	FFSPX63	S38 49.893	E177 26.076	623 ft
FMNZ18	C8	FFSPX63	S39 00.420	E177 30.223	66 ft
FMNZ19	C8	FFSPX63	S38 38.468	E177 49.218	984 ft
FMNZ20	C8	FFSPX63	S38 50.338	E177 28.250	1115 ft
FMNZ21	C8	FFSPX63	S38 39.400	E177 50.590	230 ft
FMNZ22	C8	FFSPX63	S38 15.270	E178 04.796	2001 ft
FMNZ23	C8	FFSPX63	S38 38.670	E177 48.551	1312 ft
FMNZ24	C8	FFSPX63	S38 49.240	E177 28.361	361 ft
FMNZ25	C8	FFSPX63	S38 40.090	E177 31.658	1608 ft
FMNZ26	C8	FFSPX63	S39 08.981	E177 55.623	394 ft
FMNZ27	C8	FFSPX63	S38 18.126	E178 06.776	1378 ft
FMNZ28	C8	FFSPX63	S38 49.931	E177 27.576	1411 ft
FMNZ29	C8	FFSPX63	S38 16.658	E178 06.211	1804 ft
FMNZ30	C8	FFSPX63	S38 49.596	E177 27.438	1411 ft
FMNZ31	C8	FFSPX63	S38 22.065	E177 58.468	1312 ft
FMNZ32	C8	FFSPX63	S38 40.560	E177 33.065	1706 ft
FMNZ33	C8	FFSPX63	S38 34.860	E177 41.191	1444 ft
FMNZ34	C8	FFSPX63	S38 46.468	E177 53.621	164 ft

Forestry Emergency Landing Points (Cont):

Hikurangi Forest Farms Ltd					
Ident	Radio Ch		Lat	Long	Alt
HFF 01	C41	HFF 6	S38 06.587	E177 52.882	2392 ft
HFF 02	C41	HFF 2	S38 07.930	E177 55.285	1991 ft
HFF 03	C41	HFF 2	S38 08.999	E177 54.633	2585 ft
HFF 04	C41	HFF 6	S38 09.323	E177 57.155	1909 ft
HFF 05	C41	HFF 2	S38 13.626	E178 17.312	614 ft
HFF 06	C41	HFF 2	S38 14.390	E178 12.049	1070 ft
HFF 07	C41	HFF 2	S38 15.569	E178 11.396	899 ft
HFF 08	C41	HFF 8	S38 15.804	E178 08.792	1371 ft
HFF 09	C41	HFF 2	S38 18.588	E178 14.036	663 ft
HFF 10	C41	HFF 2	S38 15.688	E178 03.425	1814 ft
HFF 11	C41	HFF 2	S38 17.131	E178 00.487	1001 ft
HFF 12	C41	HFF 2	S38 18.322	E178 03.794	1306 ft
HFF 13	C40	HFF 1	S38 21.748	E178 03.715	1440 ft
HFF 14	C40	HFF 1	S38 24.025	E178 04.524	1686 ft
HFF 15	C40	HFF 7	S38 25.936	E178 04.858	1447 ft
HFF 16	C40	HFF 7	S38 27.799	E178 01.942	1378 ft
HFF 17	C40	HFF 1	S38 33.572	E178 05.648	1237 ft
HFF 18	C40	HFF 1	S38 34.728	E178 09.499	105 ft
HFF 19	C43	HFF 4	S38 49.511	E177 53.053	230 ft
HFF 20	C43	HFF 4	S38 50.329	E177 51.346	1650 ft
HFF 21	C43	HFF 4	S38 50.977	E177 52.506	1040 ft
HFF 22	C43	HFF 4	S38 53.660	E177 53.765	1132 ft
HFF 23	C43	HFF 4	S38 53.063	E177 46.196	2034 ft
HFF 24	C42	HFF 3	S38 51.811	E177 34.314	2228 ft
HFF 25	C42	HFF 3	S38 51.087	E177 32.194	30 ft
HFF 26	C42	HFF 3	S38 49.509	E177 33.154	1486 ft
HFF 27	C42	HFF 3	S38 52.705	E177 26.461	135 ft
HFF 28	C41	HFF2	S38 09.675	E177 51.070	4636 ft
HFF 29	C09		S38 17.022	E177 50.859	1024 ft
HFF 30	C41	HFF2	S38 19.539	E178 10.292	312 ft
HFF 31	C41	HFF2	S38 22.083	E178 17.855	62 ft
HFF 32	C40	HFF 1	S38 25.226	E178 03.536	1821 ft
ELP T1			S38 33.560	E178 09.190	

Forestry Emergency Landing Points (Cont):

Juken NZ Ltd					
Ident	Radio Ch		Lat	Long	Alt
JNL 01	C12	JNL 8	S38 26.328	E178 07.825	1499 ft
JNL 02	C12	JNL 8	S38 28.422	E178 07.738	1001 ft
JNL 03	C12	JNL 8	S38 31.102	E178 05.780	1001 ft
JNL 04	C12	JNL 8	S38 31.399	E178 02.983	1499 ft
JNL 05	C31	JNL 7	S38 54.500	E177 50.236	1699 ft
JNL 06	C31	JNL 7	S38 55.874	E177 50.570	1499 ft
JNL 07	C31	JNL 7	S38 58.557	E177 50.720	1401 ft
JNL 08	C31	JNL 7	S38 55.687	E177 53.090	1601 ft
JNL 09	C31	JNL 7	S38 52.919	E177 52.596	1601 ft
JNL 10	C31	JNL 7	S38 51.503	E177 50.760	2001 ft
JNL 11	C31	JNL 7	S38 52.795	E177 51.444	1801 ft
JNL 12	C31	JNL 7	S38 56.772	E177 48.497	1099 ft
JNL 13	C31	JNL 7	S38 58.828	E177 49.546	699 ft
JNL 14	C31	JNL 7	S39 00.763	E177 48.056	299 ft
JNL 15	C31	JNL 7	S38 53.397	E177 48.080	
JNL 16	C31	JNL 7	S38 55.379	E177 48.080	1201 ft
JNL 17	C13	JNL 10	S38 51.417	E177 43.147	2201 ft
JNL 18	C31	JNL 7	S38 54.417	E177 44.247	2001 ft
JNL 19	C31	JNL 7	S38 51.007	E177 46.857	2201 ft
JNL 20	C13	JNL 10	S38 55.387	E177 40.543	2201 ft
JNL 21	C13	JNL 10	S38 57.251	E177 41.590	1801 ft
JNL 22	C33	JNL 9	S39 00.284	E177 33.484	98 ft
JNL 23	C33	JNL 9	S38 59.285	E177 31.710	499 ft
JNL 24	C33	JNL 9	S38 59.305	E177 34.535	249 ft
JNL 25	C33	JNL 9	S38 53.629	E177 13.935	1499 ft
JNL 26	C33	JNL 9	S38 54.308	E177 10.934	1201 ft
JNL 27	C33	JNL 9	S38 56.762	E177 13.418	299 ft
JNL 28	C33	JNL 9	S39 59.112	E177 17.509	1001 ft
JNL 29	C33	JNL 9	S39 00.407	E177 16.428	801 ft
JNL 30	C33	JNL 9	S39 01.336	E177 15.580	1001 ft
JNL 31	C33	JNL 9	S39 02.436	E177 18.486	400 ft
JNL 32	C33	JNL 9	S39 02.595	E177 16.974	899 ft
JNL 33	C33	JNL 9	S39 03.060	E177 16.012	801 ft

Forestry Emergency Landing Points (Cont):

Kohntrol Forestry					
Ident	Radio Ch		Lat	Long	Alt
KNL 01	C2	Kohn 1	S37 54.461	E178 11.834	
KNL 02	C1	Kohn 1	S38 36.843	E177 49.036	
KNL 04	C1	Kohn 1	S38 49.592	E177 45.829	
KNL 05	C1 – C2 Kohn 1		S38 27.701	E178 10.381	
KNL 06	C1 – C2 Kohn 1		S38 27.170	E178 10.318	
KNL 13	C1	Kohn 1	S38 20.758	E178 00.119	
KNL 09	C1	Kohn 1	S38 36.507	E177 48.796	
KNL 10	C1	Kohn 1	S38 28.108	E177 58.554	
KNL 11	C1	Kohn 1	S38 47.090	E177 46.335	
KNL 12	C1	Kohn 1	S38 42.976	E177 36.401	
KNL 14	C1	Kohn 1	S38 42.941	E177 31.436	
KNL 17	C1	Kohn 1	S38 25.662	E177 59.604	
KNL 15	C1 – C2 Kohn 1		S38 19.087	E178 07.015	
KNL 19	C1	Kohn 1	S38 20.234	E178 11.888	

Forestry Emergency Landing Points (Cont):

Ngati Porou Whanui Forests					
Ident	Radio Ch	Lat	Long	Alt	
NP 01	C 18 NGATI 18	S37 56.434	E178 14.724	722 ft	
NP 02	C 18 NGATI 18	S37 58.886	E178 18.365	984 ft	
NP 03	C 18 NGATI 18	S37 58.732	E178 17.245	1050 ft	
NP 04	C 18 NGATI 18	S37 58.481	E178 16.707	984 ft	
NP 05	C 18 NGATI 18	S37 59.563	E178 16.725	591 ft	
NP 06	C 18 NGATI 18	S37 42.179	E178 23.986	459 ft	
NP 07	C 18 NGATI 18	S37 44.873	E178 14.520	984 ft	
NP 08	C 18 NGATI 18	S38 02.083	E178 19.355	689 ft	
NP 09	C 18 NGATI 18	S37 47.273	E178 17.301	1115 ft	
NP 10	C 18 NGATI 18	S38 07.920	E177 47.797	1903 ft	
NP 11	C 18 NGATI 18	S37 49.468	E178 14.214	1247 ft	
NP 12	C 18 NGATI 18	S38 17.076	E178 14.410	328 ft	
NP 13	C 18 NGATI 18	S37 41.867	E178 16.904	656 ft	
NP 14	C 18 NGATI 18	S37 49.191	E178 12.686	1312 ft	
NP 15	C 18 NGATI 18	S37 55.890	E178 18.519	722 ft	
NP 16	C 18 NGATI 18	S37 50.128	E178 05.736	1706 ft	
NP 17	C 18 NGATI 18	S37 42.514	E178 16.835	919 ft	
NP 18	C 18 NGATI 18	S37 51.896	E178 04.701	1575 ft	
NP 19	C 18 NGATI 18	S37 49.588	E178 19.561	722 ft	
NP 20	C 18 NGATI 18	S37 39.069	E178 19.191	558 ft	
NP 21	C 18 NGATI 18	S37 40.685	E178 19.017	656 ft	
NP 22	C 18 NGATI 18	S37 41.322	E178 13.219	1509 ft	
NP 23	C 18 NGATI 18	S37 52.851	E178 09.591	984 ft	
NP 24	C 18 NGATI 18	S37 41.064	E178 14.937	853 ft	
NP 25	C 18 NGATI 18	S37 40.961	E178 15.992	853 ft	
NP 26	C 18 NGATI 18	S37 40.362	E178 18.060	328 ft	
NP 27	C 18 NGATI 18	S37 43.748	E178 13.565	1640 ft	
NP 28	C 18 NGATI 18	S37 45.354	E178 23.475	427 ft	
NP 29	C 18 NGATI 18	S37 52.170	E178 19.343	328 ft	
NP 30	C 18 NGATI 18	S37 45.002	E178 18.293	722 ft	
NP 31	C 18 NGATI 18	S38 15.465	E178 13.997	525 ft	
NP 32	C 18 NGATI 18	S38 16.108	E178 14.511	459 ft	
NP 33	C 18 NGATI 18	S38 04.363	E178 17.840	656 ft	
NP 34	C 18 NGATI 18	S37 45.344	E178 22.663	459 ft	
NP 35	C 18 NGATI 18	S38 00.191	E178 16.019	656 ft	
NP 36	C 18 NGATI 18	S37 48.066	E178 21.536	722 ft	
NP 37	C 18 NGATI 18	S37 58.290	E178 18.375	1247 ft	
NP 38	C 18 NGATI 18	S37 53.369	E178 13.802	1115 ft	
NP 39	C 18 NGATI 18	S37 47.942	E178 20.953	1115 ft	
NP 40	C 18 NGATI 18	S37 56.926	E178 09.502	2238 ft	
NP 41	C 18 NGATI 18	S38 04.592	E178 18.377	394 ft	

Forestry Emergency Landing Points (Cont):

Crown Forests managed by NPWFL					
CF 1	C 18	NGATI 18	S38 09.400	E178 19.400	80 ft
CF 2	C 18	NGATI 18	S37 49.200	E178 20.400	100 ft
CF 3	C 18	NGATI 18	S37 54.600	E178 22.400	60 ft
CF 4	C 18	NGATI 18	S37 42.300	E178 32.300	0 ft
CF 5	C 18	NGATI 18	S38 01.200	E178 16.500	160 ft
CF 6	C 18	NGATI 18	S38 01.200	E178 16.500	160 ft

Forestry Emergency Landing Points (Cont):

Olsens					
Ident	Radio Ch		Lat	Long	Alt
PFO 01	C52	FFSPX63	S38 10.747	E178 07.483	
PFO 02	C52	FFSPX63	S37 48.142	E178 16.821	
PFO 03	C52	FFSPX63	S38 04.325	E178 19.534	
PFO 04	C52	FFSPX63	S38 06.759	E178 17.612	
PFO 05	C52	FFSPX63	S38 09.768	E178 08.132	
PFO 06	C52	FFSPX63	S38 12.690	E178 09.746	
PFO 07	C52	FFSPX63	S38 12.883	E178 11.449	
PFO 08	C52	FFSPX63	S38 13.137	E178 04.446	
PFO 09	C52	FFSPX63	S38 15.154	E178 05.199	
PFO 10	C52	FFSPX63	S38 14.591	E178 02.265	
PFO 11	C52	FFSPX63	S38 17.096	E177 51.048	
PFO 12	C52	FFSPX63	S38 17.784	E177 54.765	
PFO 13	C52	FFSPX63	S38 17.157	E177 56.769	
PFO 14	C52	FFSPX63	S38 19.746	E177 31.876	
PFO 15	C52	FFSPX63	S38 19.859	E177 32.774	
PFO 16	C52	FFSPX63	S38 22.852	E177 28.215	
PFO 17	C52	FFSPX63	S38 22.096	E177 48.229	
PFO 18	C52	FFSPX63	S38 31.034	E177 45.914	
PFO 19	C52	FFSPX63	S38 33.986	E177 47.721	
PFO 20	C52	FFSPX63	S38 33.946	E177 49.255	
PFO 21	C52	FFSPX63	S38 21.750	E177 49.928	
PFO 22	C52	FFSPX63	S38 20.997	E177 56.304	
PFO 23	C52	FFSPX63	S38 23.336	E177 57.335	
PFO 24	C52	FFSPX63	S38 24.677	E177 57.754	
PFO 25	C52	FFSPX63	S38 27.362	E177 58.312	
PFO 26	C52	FFSPX63	S38 27.834	E177 58.183	
PFO 27	C52	FFSPX63	S38 20.024	E178 04.194	
PFO 28	C52	FFSPX63	S38 18.415	E178 07.132	
PFO 29	C52	FFSPX63	S38 20.637	E178 06.633	
PFO 30	C52	FFSPX63	S38 22.023	E178 07.888	
PFO 31	C52	FFSPX63	S38 19.571	E178 10.479	
PFO 32	C52	FFSPX63	S38 19.501	E178 11.635	
PFO 33	C52	FFSPX63	S38 20.779	E178 13.511	
PFO 34	C52	FFSPX63	S38 20.895	E178 14.733	
PFO 35	C52	FFSPX63	S38 45.704	E177 22.677	
PFO 36	C52	FFSPX63	S38 45.029	E177 31.578	
PFO 37	C52	FFSPX63	S38 45.405	E177 35.777	
PFO 38	C52	FFSPX63	S38 46.827	E177 37.239	
PFO 39	C52	FFSPX63	S38 40.075	E177 42.899	
PFO 40	C52	FFSPX63	S38 43.673	E177 42.781	
PFO 41	C52	FFSPX63	S38 47.580	E177 50.039	
PFO 42	C52	FFSPX63	S38 46.674	E177 48.042	
PFO 43	C52	FFSPX63	S38 41.509	E177 52.022	

Forestry Emergency Landing Points (Cont):

Olsens Cont.					
Ident	Radio Ch		Lat	Long	Alt
PFO 44	C52	FFSPX63	S38 37.353	E178 02.280	
PFO 45	C52	FFSPX63	S38 36.090	E178 08.798	
PFO 46	C52	FFSPX63	S38 56.844	E177 27.067	
PFO 47	C52	FFSPX63	S38 53.850	E177 30.145	
PFO 48	C52	FFSPX63	S38 54.701	E177 31.558	
PFO 49	C52	FFSPX63	S38 56.658	E177 43.251	
PFO 50	C52	FFSPX63	S38 53.692	E177 48.110	
PFO 51	C52	FFSPX63	S38 54.732	E177 48.976	
PFO 52	C52	FFSPX63	S38 52.283	E177 52.609	
PFO 53	C52	FFSPX63	S38 56.843	E177 27.067	
PFO 54	C52	FFSPX63	S38 53.145	E177 49.101	
PFO 55	C52	FFSPX63	S38 56.759	E177 48.457	
PFO 56	C52	FFSPX63	S38 58.636	E177 48.964	
PFO 57	C52	FFSPX63	S39 00.702	E177 48.098	
PFO 58	C52	FFSPX63	S38 50.812	E177 20.613	
PFO 59	C52	FFSPX63	S38 20.635	E178 06.633	
PFO 60	C52	FFSPX63	S39 01.451	E177 52.433	
PFO 61	C52	FFSPX63	S39 10.504	E177 54.274	

East Coast School GPS Locations:

School	Lat	Long
HANGAROA SCHOOL	S38 41.247	E177 36.788
HATEA-A-RANGI	S38 07.855	E178 18.923
HIRUHARAMA SCHOOL	S37 55.698	E178 15.642
MAKARIKA SCHOOL	S37 57.048	E178 13.533
MAKAURI SCHOOL	S38 37.504	E177 57.428
MANGATUNA SCHOOL	S38 17.633	E178 16.355
MANUTUKE SCHOOL	S38 40.807	E177 54.242
MATA SCHOOL	S38 05.932	E178 03.206
MATAWAI SCHOOL	S38 21.503	E177 32.065
MOTU SCHOOL	S38 15.359	E177 33.027
MURIWAI SCHOOL	S38 45.334	E177 55.271
NEW LIFE CHRISTIAN ACADEMY	S38 40.564	E178 02.932
NGATA MEMORIAL COLLEGE	S37 53.581	E178 19.455
NGATAPA SCHOOL	S38 35.074	E177 47.422
ORMOND SCHOOL	S38 33.182	E177 55.172
PATUTAHI SCHOOL	S38 37.551	E177 53.292
POTAKA SCHOOL	S37 34.390	E178 08.504
RERE SCHOOL	S38 32.865	E177 37.813
SONRISE CHRISTIAN SCHOOL	S38 39.067	E178 01.403
TE KAINGA WHAIORA CHILDREN'S HEALTH C	S38 39.432	E177 59.265
TE KARAKA SCHOOL	S38 28.148	E177 52.158
TKKM O NGA URI A MAUI	S38 40.197	E178 02.723
TKKM O TOKOMARU	S38 07.638	E178 18.965
TKKM O WAIPIRO	S38 01.256	E178 19.843
TE PUIA SPRINGS SCHOOL	S38 03.363	E178 18.270
TE WAHA-O-REREKOHU AREA SCHOOL	S37 38.025	E178 21.933
TIKITIKI SCHOOL	S37 47.590	E178 24.756
TINIROTO SCHOOL	S38 46.412	E177 34.189
TKKM O TAPERE-NUI-A-WHATONGA	S37 46.352	E178 27.558
TKKM O TE WAIU O NGATI POROU	S37 53.414	E178 19.305
TOLAGA BAY AREA SCHOOL	S38 22.384	E178 18.011
WAERENGA-O-KURI SCHOOL	S38 41.278	E177 46.301
WAIKIRIKIRI SCHOOL	S38 40.476	E178 03.367
WAIKOHU COLLEGE	S38 28.140	E177 51.969
WAIMATA VALLEY SCHOOL	S38 30.523	E178 02.663
WAINGAKE SCHOOL	S38 47.193	E177 47.885
WAIPAUA STATION SCHOOL	S38 17.117	E177 51.192
WHAKAANGIANGI SCHOOL	S37 42.349	E178 18.951
WHANGARA SCHOOL	S38 33.371	E178 12.895
WHAREKAHIKA SCHOOL	S37 35.492	E178 17.539
WHATATUTU SCHOOL	S38 22.780	E177 50.087

Station Locations East Coast:

station_name	Heli_Latitude	Heli_Longitude	home_phone
A Woolfield	-38 41.55006	178 03.72206	06 8684491
AB & BN Kemp P/ship	-38 37.23437	177 55.46936	06 8681079
AC Sutton	-38 38.12237	177 59.80919	06 8685891
Aerial Station	-38 28.82937	177 36.38700	06 8678452
AG & E Young Partnership	-38 02.18456	177 23.88255	07 3157895
AG & JE Cornelius P/ship	-38 45.67453	177 55.24549	06 8628470
Ahimanawa	-38 31.28879	178 12.49030	06 8622088
Ahirau Farm	-38 28.15765	177 54.04278	06 8623950
Akatea Orchard	-38 34.66594	177 55.08079	06 8625798
Alton Park	-38 37.72310	177 56.81725	06 8686408
Aorangi	-38 37.97620	177 51.84449	06 8627798
AR & JB Judd P/ship	-38 36.25106	177 54.08748	06 8686737
Arakih Station	-38 23.69867	178 06.93122	06 8626807
Astley	-38 38.67656	177 56.60935	06 8688718
Atea	-38 31.82708	177 32.17431	06 8670832
Awanui Citrus-Awanui Vineyard	-38 35.27717	177 55.41849	06 8625811
Awanui Station	-38 29.33276	178 09.79814	06 8622873
Barwick & Lamont P/ship	-38 29.34918	177 53.26580	06 8623814
Bayliss Plumbing	-38 36.75791	177 58.58543	06 8675490
Bell Vineyard	-38 37.04590	177 58.62227	06 8677723
Belmont	-38 25.49785	177 42.47024	06 8623408
Birch Hill Station	-38 17.26601	177 35.03018	06 8635855
Bournebrook Station	-38 36.79492	177 42.35381	06 8637051
Braemar Farm	-38 42.42902	177 50.47382	
Brookfield Stn	-38 15.00095	177 32.71579	06 8635825
Brooklands	-38 14.96399	177 34.14303	06 8635823
Bruce Estate	-38 34.66783	177 55.55395	06 8625687
Burnage Station	-38 29.22742	177 30.14070	06 8624547
Carnagh	-38 29.50386	178 12.45695	06 8622829
Cheviot Hills	-38 41.30204	177 43.60697	06 8637090
College Vineyards Ltd	-38 35.64530	177 56.36144	06 8625752
Collingwood	-38 38.30664	178 01.30534	06 8686497
Coolibah Farm	-38 39.39426	177 57.25050	06 8689393
Cosy Cottage	-38 39.93395	177 50.17763	06 8627655
Cottles Farm	-38 21.97243	178 17.85889	06 8626168
Craill Family Trust	-38 38.74948	177 50.90188	06 8627849
Cullerlie	-38 35.73302	177 58.27877	06 8674937
Doonhill Stn	-38 22.32462	177 36.12682	06 8678845
Dumgoyne Station	-38 40.95029	177 37.06954	
Eastern Bay Orchards	-38 38.62340	177 54.08722	06 8685571
Easternstar Orchard	-38 32.58172	177 54.94894	06 8625456
Eastwoodhill	-38 33.81295	177 43.20497	06 8639800
Eko Station	-37 45.68717	178 26.94207	06 8643780
Elmore Station	-38 26.50306	177 32.38463	06 8624516
Emerald Hills Farm	-38 46.47350	177 48.06447	06 8629771
Emirau Station	-38 27.89456	178 16.08313	06 8622704
Engari Farm	-38 36.99292	177 55.93685	06 8670850
F & D Briant P/ship	-38 38.06678	177 54.19349	06 8627759
Fairfield Farm	-38 31.30879	177 53.50247	06 8625796
Felkirk Orchards	-38 40.25259	177 52.10222	06 8628544
Ferkins & Ferkins	-38 40.82201	177 56.96404	06 8676928
Fernside Station	-38 08.47778	178 07.66058	06 8645451
Findlay	-38 53.65340	177 53.68273	06 8679799
Forest Enterprises Ltd	-38 28.34526	177 57.49639	06 3771585
Four Seasons	-38 37.17931	177 56.31001	06 8673044
Fruitworx Ltd	-38 39.42897	177 56.05458	06 8671421
Glanavan P/ship	-38 35.17155	177 55.50837	06 8625860
Glasgow Station P/ship	-38 24.03533	178 09.12037	06 8638364
Glen Innis Stn	-38 42.54349	177 36.89635	06 8637126

Station Locations East Coast:

station_name	Heli_Latitude	Heli_Longitude	home_phone
Glenburn Station	-38 26.48504	177 41.93099	06 8623493
Glenhaven Vineyard	-38 32.49565	177 55.10078	06 8625690
Glenstrae	-38 32.39558	177 45.85713	06 8639002
Glentui Station	-38 24.80243	178 09.66182	06 8638367
Glenview Farm	-38 22.06852	177 32.77606	06 8624806
Golden Horizon	-38 34.59400	177 55.52122	06 8625835
Goldenvines	-38 35.86279	177 58.10719	06 8676266
GR & JN Hale P/ship	-38 21.68899	178 13.09618	06 8626627
Haupapa Stn	-38 32.28015	177 25.79053	06 8674422
Hautapu Station	-38 29.03361	177 50.48606	06 8623737
Hazlewood Farm	-38 21.48704	177 32.20948	06 8624809
Heavitree Fruit Farm	-38 36.67512	177 55.85050	06 8679246
Hebron Station	-38 36.90712	177 29.83029	06 8684514
Hemyock Orchards	-38 37.06089	177 54.16092	06 8627666
Heuvel Farm Ltd	-38 29.29204	177 53.75494	06 8623090
Hicks Bay Motels Ltd	-37 35.67114	178 18.37079	06 8644035
Highgate Farm	-38 47.39769	177 55.29952	06 8628435
Highwood Farm	-38 26.75830	177 52.43452	06 8623122
Hikarere	-38 35.37157	177 54.95887	06 8674467
Hikurangi Forest Farms	-38 27.81168	178 01.86665	06 8679799
Hikutau Station	-38 41.13388	177 47.11663	06 8678111
Hinenui Station	-38 44.59933	177 53.92226	06 8628768
Hiwiroa Station	-38 28.61895	178 05.27413	06 8670345
Homewood Farm	-38 36.46793	177 52.91053	06 8627784
Hore Hore Station	-37 59.34295	178 08.01557	
Hospital Farm	-38 37.84349	178 00.04823	06 8687261
Huarakau P/ship	-38 37.04683	177 56.03030	06 8688993
Humarie Station	-38 32.92896	177 39.44010	06 8670861
Illawarra Farm	-38 39.75497	177 57.43322	06 8686699
Innisvail Stn	-38 15.60692	177 32.19036	
J & T Hickey Trust	-38 37.94587	177 56.99846	06 8676341
Jackman & Black	-38 46.03522	177 35.01917	06 8681905
Journeys End Station	-38 27.21466	177 20.60452	06 8678557
JTP	-37 45.36577	178 25.96156	06 8643707
Judd Rd Vineyards	-38 36.22830	177 53.94863	06 8684060
Kahui Station	-38 45.25744	177 35.67137	06 8637195
Kahukura	-38 28.52267	177 40.98333	06 8635002
Kahurangi	-38 38.04872	177 56.67167	06 8670194
Kaikino Stn	-38 43.26371	177 34.15476	06 8637192
Kaikoura Station	-38 45.85926	177 38.82883	06 8628415
Kainga Farm	-38 34.53684	177 47.46531	06 8639502
Kainuiwai Farm	-38 36.66983	177 49.28770	06 8639825
Kala-Miah	-38 39.50733	177 55.30072	06 8637128
Kamiti	-37 45.53438	178 29.28140	06 8679511
Kanui Farm	-38 25.67789	177 33.38708	06 8624703
Kanuka Ridge	-38 18.45136	178 15.25717	06 8626751
Kaomata Farm	-38 39.07538	177 57.50284	06 8688555
Karaka Station	-38 34.76810	177 44.37546	06 8639824
Karakarua Farm	-38 37.57547	178 03.38764	06 8672232
Kaupapa	-38 41.05927	177 54.76607	06 8628541
Keane Properties	-38 36.53648	178 00.36691	06 8688884
Keizil	-38 37.70426	177 49.56810	06 8627199
Kengorm	-38 38.90786	177 54.65016	06 8627701
Kenmore Farm	-38 38.87467	177 50.62888	06 8633498
Kia Ora Station	-38 29.43025	177 57.70392	06 8625633
Kie Kie	-37 59.07469	178 19.42184	06 8647815
Kiriroa Stn	-38 20.05804	177 31.70983	07 3157850
Kirkpatrick	-38 38.02134	177 58.04578	06 8675552
Knapdale Eco Lodge	-38 34.40486	177 56.35750	06 8625444

Station Locations East Coast Cont.

station_name	Heli_Latitude	Heli_Longitude	home_phone
Koawa Farm	-38 26.04174	177 53.54958	06 8623717
Kohata Station	-38 29.00102	178 11.41586	06 8622634
Kohekohe Stn	-38 43.85885	177 52.17926	06 8628806
Kokoariki Farm	-38 28.05413	177 49.41599	06 8623632
Kopua Farm	-38 49.81591	177 54.45081	06 8685758
Kopuni Station	-38 18.83244	178 19.23640	06 8626345
Korimako Orchard	-38 38.86658	177 56.94775	06 8675709
Koro Station	-38 28.63694	177 41.80059	06 8623444
Kotare Station	-38 21.58009	177 29.87018	06 8624817
Koutunui and Routunui Forests	-38 03.71231	178 19.77482	06 8671530
Kowhai Stn	-38 29.24683	178 05.78755	06 8670315
Kupenga Station	-38 37.35404	177 31.86490	06 8670810
Kuranda	-38 40.46717	177 55.97734	06 8628576
Lanark Orchard	-38 37.02428	177 54.39709	06 8627737
Landsea Developments Services Ltd	-38 33.81451	177 42.85144	06 8632820
Larsen Pakihi Block	-38 13.87937	177 30.60544	06 8686497
Lavenham	-38 39.79526	177 50.02661	06 8627024
Linburn	-38 32.21144	178 02.02709	06 8670375
Lindas Farm	-37 56.97885	178 13.58489	06 8640008
Line 8 Bulls Ltd	-37 46.57040	178 22.78922	
Linwood Station	-38 40.75771	177 46.33711	06 8677466
Littleholme	-38 29.13950	177 41.78026	06 8623409
Lochiel Investments Ltd	-38 37.08134	177 55.56701	06 8681306
Loffler P/Ship	-38 34.60492	178 10.68549	06 8622879
Lyn Brae	-38 38.66857	178 01.29725	06 8689225
Lyndhurst P/ship	-38 40.41394	177 55.89352	06 8628430
Mahaanui Station	-38 43.48053	177 35.16296	06 8637180
Mahana Station	-38 28.66193	178 13.75730	06 8622899
Mahunga Station	-38 25.41986	177 27.32949	06 8621030
Maikaika Stn	-38 23.84077	178 17.90536	06 8626867
Makororiri Station	-38 39.04550	178 07.33773	06 8689027
Mangakino Stn	-38 24.78749	177 49.80309	06 8621850
Mangaoae Stn	-38 27.32448	177 57.14340	06 8623680
Mangaoporo Farms	-37 51.24827	178 18.78473	06 8648066
Mangapouri Station	-38 47.14182	177 47.08044	06 8629429
Mangarere Station	-38 24.86674	177 33.76409	06 8624882
Mangatahu Station	-38 14.05476	177 44.79691	06 8687261
Manurata	-38 37.85424	177 54.37954	06 8627856
Manurere Station	-38 35.83848	177 48.01020	06 8639852
Mapiri Stn	-38 48.75999	177 54.18416	06 8629650
Maranga Station	-38 41.52019	177 45.59664	06 8679326
Maranui P/ship	-38 36.12121	177 55.33798	06 8688993
Maranui Station	-38 32.65025	177 57.80708	06 8625882
Marariki	-38 32.04527	177 45.54755	06 8639525
Marotiri Farm P/Ship	-38 05.30312	178 17.47533	06 8646857
Marua Station	-38 24.44947	177 56.77128	06 8623600
Mata-a-rangi	-38 28.39790	177 52.57287	06 8623718
Matahiia Stn	-37 55.20103	178 13.34510	06 8640024
Mataurangui Stn	-38 26.13677	178 09.74788	06 8622858
Matawai Deer Park	-38 22.03918	177 31.19651	06 8624099
Matawai Station	-38 24.53541	177 36.84146	06 8678565
Maunga-O-Rangi Station	-38 32.69521	178 07.54672	06 8622626
Maungaroa Station	-37 46.00572	177 45.76138	07 3252727
Maungarua Station	-38 39.16480	177 41.93357	06 8637090
Meadowbank	-38 36.19658	177 55.68812	06 8684067
Meadowbank Station	-38 32.82199	177 57.39041	06 8625610
Mihi Marino Farm P/ship	-38 44.34463	177 55.00681	06 8628781
Mingi Valley Stn	-38 31.51768	177 36.81445	06 8670857
Moanui Stn	-38 24.99834	177 22.07239	06 8587230

Station Locations East Coast Cont.

station_name	Heli_Latitude	Heli_Longitude	home_phone
Mokairau Station	-38 28.47617	178 14.55414	06 8622701
Mokonui Station	-38 32.34483	177 33.56780	06 8670849
Morunga Station	-38 29.33032	177 29.00905	06 8624536
Moyglen Station	-38 27.71813	177 39.23875	06 8623615
MRB & M Dixon P/ship	-38 36.91099	177 59.27371	06 8688994
Mutuera Stn	-38 33.98489	177 28.01652	06 8670826
Nettleton Station	-38 25.71671	177 43.14877	06 8687158
Newstead P/ship	-38 38.52184	177 57.38599	06 8624817
Ngahereroa Station	-38 36.02434	178 03.81267	06 8675460
Ngawhare Farm	-38 38.85624	177 56.81105	06 8689634
Nob Hill Farm	-38 40.77863	178 02.67789	06 8687261
Nortoft Orchard	-38 37.96340	177 52.63095	06 8627107
NS & YM Brown	-38 36.80212	177 56.48440	06 8672989
Nuhiti Station	-38 13.16581	178 15.89323	06 8626308
Ohuka Farm	-38 28.15387	177 37.31435	06 8625649
Ohuka Farm P/ship	-38 15.47926	177 35.15503	06 8625649
Okitu Hills	-38 40.09892	178 05.69282	06 8688271
Old Works Orchard	-38 31.28924	177 53.78291	06 8625677
Omapere Station	-38 22.60951	177 47.44409	06 8687261
Omatarangi Trust Orchard	-38 36.76018	177 56.16343	06 8684406
Ommond Est	-38 34.69816	177 55.99460	
Opau Homestead	-38 40.62361	177 54.44850	06 8628732
Operation 2020	-38 38.22428	178 01.35676	09 8350999
Ora Et Labora	-38 39.53672	177 55.19577	06 8675110
Orere Station	-38 38.53256	177 37.82619	06 8678089
Oriwha Station	-38 26.25256	177 42.22797	06 8623456
Otau P/sip	-38 35.23549	177 57.49276	06 6676060
Otokorau Station	-38 26.74816	177 37.54597	06 8623499
Otonga Station	-38 30.00430	178 05.36950	06 8670336
P & P Ikaa	-38 34.94694	177 54.29492	06 8627603
Panui Stn	-38 24.61706	177 33.90413	06 8624875
Paokahu	-38 40.55432	177 58.87447	06 8687261
Paparangi Stn	-38 12.03061	177 36.88440	06 8627666
Papatahi P/ship	-38 20.80011	178 17.93378	06 8626623
Papatu Station & Opou Homestead	-38 41.25403	177 51.90755	06 8628758
Parikanapa Rd Forest	-38 43.81930	177 43.15751	07 3157850
Parikanapa Station	-38 45.15614	177 41.70381	06 8777349
Paritu Station	-38 56.40528	177 53.73806	06 8627858
Patutahi and Saints Vineyards	-38 38.51845	177 51.94880	
PD & ME Willock P/ship	-38 31.30433	178 11.27452	06 8622851
Pipituangi A	-37 38.07067	178 19.12635	06 8644748
Pirima Farm	-38 38.18554	177 57.60323	06 8688680
Piwi Ltd	-38 37.59917	177 53.44413	06 8627181
Pouparae Park	-38 37.77407	177 55.39245	06 8677931
Pukeroa Station	-38 30.54461	177 56.60471	06 8625880
Puketia Station	-38 27.74471	177 23.03512	06 8678597
Puketira Station	-38 32.25115	177 57.53580	06 8625546
Puketiti Station	-38 04.10365	178 15.09708	06 7646714
Puketoro Stn	-38 02.82786	178 02.92559	06 8647754
Putā Awa	-38 46.54417	177 53.87984	06 8628863
Quinney Excavating	-38 33.01134	177 56.74060	06 8625417
R & B Muir P/ship	-38 37.00958	177 52.60855	06 8627676
R & M Burke	-38 29.28502	177 52.84059	06 8625546
Ra View Station	-38 21.83008	177 29.34852	06 8624581
Rahiri Station	-38 26.18321	177 53.21526	06 8623778
Ranganui Station	-38 47.09828	177 48.13682	06 8628420
Rangatira Station	-38 26.87080	177 50.45795	06 8623873
Rarua Station	-38 24.95940	178 18.87373	06 8626703
Rata Hills Stn	-38 24.62096	177 36.61247	06 8687555

Station Locations East Coast Cont.

station_name	Heli_Latitude	Heli_Longitude	home_phone
Raukawa Stn	-38 23.55155	178 14.27791	06 8626840
Raupuke Farm	-38 29.82674	177 53.94690	06 8625870
Ravensdown Orchard	-38 40.18737	177 56.90779	06 8673863
Rawiri Station	-38 28.58522	177 26.30091	06 8678311
RC Parsons Farrier	-38 33.28441	177 55.17356	06 8625704
REC Harris & Co	-38 39.99635	178 05.90636	06 8686892
Reripi Station	-38 45.00428	177 53.28413	06 8628621
Richard B McIntyre	-38 40.20891	177 55.46218	06 8628759
Rimu Lane Trust	-38 01.17893	177 15.53659	07 3156740
Rimunui Station	-38 37.88551	178 05.75476	06 8627822
Rimunui Station	-38 40.40880	177 44.88437	06 8678192
Riverford Farm	-38 29.64108	177 54.22538	06 8625748
Riverpoint Nursery Ltd	-38 39.67840	177 55.72892	06 8688554
Riverpoint Rd	-38 39.68405	177 56.36580	
Riverton Orchard & Vineyards	-38 39.58992	177 55.25539	06 8679487
RJ & JL Prebble	-38 38.17671	177 51.69821	06 8627783
Rockwood Orchard	-38 32.38329	177 55.71322	06 8625527
Ross Est	-38 41.67001	177 52.16830	06 8628703
Rototahi Station	-38 26.60554	178 16.10721	06 8622863
Ruawai	-38 35.22774	177 48.39002	06 8639009
Sandersfarne	-38 36.63518	177 55.60714	06 8679581
Seven Bells Farm	-38 40.90332	178 03.78135	06 8676157
Shanks Farming P/ship	-38 41.12438	177 52.61608	06 8628898
Sherwood Agriculture Ltd	-38 46.37011	177 54.10350	06 8628418
Silverhill	-38 38.27414	177 50.27645	06 8627627
Smithfield Stn	-38 37.48521	177 49.47448	06 8627027
St Leger Station	-38 43.12247	177 33.21580	06 8637196
Stirling Stn	-38 42.65473	177 49.92081	06 8678096
Strathallan	-38 32.10934	177 52.01422	06 8633006
Strathleven Station	-38 41.04799	177 26.71444	06 8678073
Sun-Luvr Orchard	-38 42.48032	177 54.81050	06 8628461
Sunworth Station	-38 34.70905	177 46.82748	06 8339876
Taheke Station	-38 32.55899	177 36.37046	06 8670860
Tahora Station	-38 32.73064	177 24.46750	06 8670842
Tahunga Stn Ltd	-38 37.56845	177 30.98528	06 8670803
Taimoti Station	-38 40.98698	177 39.30766	06 8637057
Takapau Station	-38 21.55769	178 14.06424	06 8626345
Tapere Station	-38 31.46149	177 25.91274	06 8687261
Tapuie	-38 29.13098	177 57.33930	
Taumata Station	-38 34.97238	177 32.28624	06 8687725
Taumata Wahine	-38 35.90338	177 55.45730	06 8625821
Taumutu Stn	-38 45.63164	177 41.21920	06 8637007
Tawa Station	-38 23.30269	177 37.09121	06 8678402
Te Kairangatira	-38 35.63708	177 55.57048	06 8625814
Te Kohanga Station	-38 29.64766	177 39.76933	06 8623580
Te Matai Stn	-38 30.17141	178 03.29147	06 8670361
Te Papa Station	-38 29.40816	177 57.30085	06 8625655
Te Puna	-37 35.80164	178 15.67763	06 8644862
Te Taki Station	-38 45.44603	177 42.01276	06 8637200
Te Weka Farms	-38 06.65556	177 30.75835	07 3156436
Terrafirma Farm	-38 39.10040	177 56.16828	06 8677477
TH & AR Sutton P/ship	-38 34.66573	177 55.33797	06 8625507
The Ark	-38 33.48887	177 55.63104	06 8625816
The Falls	-38 31.72781	177 37.09275	06 8670853
The Lane	-38 38.97002	177 56.26753	06 8684095
The Laurels	-38 39.82753	177 46.72288	06 8678051
The Willows	-38 30.40228	177 53.72774	06 8625605
Thistleddoo	-38 40.44735	177 52.09150	06 8628846
Timatanga Trust	-38 37.57120	177 53.50360	06 8627777

Station Locations East Coast Cont.

station_name	Heli_Latitude	Heli_Longitude	home_phone
Tiroroa P/ship	-38 36.54091	177 58.10933	06 8688357
Tohua Station	-38 29.29336	178 10.82840	06 8622814
Totaranui Vineyard	-38 34.27188	177 55.91315	06 8625761
Triangles	-38 42.97535	177 49.70998	06 8628667
Tropical Fruits	-38 35.77778	177 56.04998	06 8625752
Tuahine Point	-38 42.23143	178 04.10528	06 8625872
Turihaua Angus Stud	-38 37.67009	178 09.70714	06 8688421
Twigley Farm Trust	-38 36.92349	177 58.16176	06 8630965
Uluru Farm	-38 41.02747	177 54.39580	06 8628662
Various Forestry Blocks	-38 40.10832	177 33.70087	06 3465329
Various Forests	-38 18.29410	178 03.82034	06 8679799
W & KJ Waite	-38 33.11647	177 56.28543	06 8625867
Waihapua	-38 20.67288	178 10.09666	
Waihire Station	-38 35.72225	177 57.95246	06 8687261
Waikakariki Station	-38 19.34077	177 48.60509	06 8687261
Waikohu Station	-37 35.37794	178 14.55875	06 8644713
Waikohu Station	-38 27.57326	177 47.68086	06 8623612
Waikura Station	-38 38.12516	177 38.14444	06 8678096
Waimarae Orchard	-38 34.48581	177 55.27993	06 8625644
Waimata Valley Blocks	-38 33.82838	178 02.97431	06 3771585
Waimata Valley Farms Ltd	-38 39.63448	178 02.95859	06 8687728
Wainui Station P/ship	-38 40.78855	178 04.55482	06 8675991
Waiora Trust	-37 58.50467	177 26.46480	07 3158167
Waipaoa Station Ltd Forest	-38 18.35992	177 52.60735	06 8628703
Waipaoa Stn	-38 17.20721	177 51.01046	06 8621535
Waipuke	-38 35.28415	177 48.06424	06 8639558
Wairakaia P/ship	-38 46.43996	177 54.78732	06 8628075
Wairangi	-38 08.90671	177 54.63995	06 8679799
Wairata Forest Farm	-38 17.76592	177 20.15956	07 3157763
Wairi	-38 19.77888	178 18.41714	06 8671495
Waitangirua - Pakihi	-38 15.25292	177 36.00524	06 8687261
Waitangirua Farm Ltd	-37 39.29692	178 10.11497	
Wayne's Waste	-38 38.69989	177 57.24871	06 8673606
Westmere	-38 31.59869	177 53.02504	06 8625855
Whaiere Stn	-38 30.75166	177 26.31244	06 8678968
Whaiti	-38 37.97578	177 52.02043	06 8627607
Whakarau Station	-38 22.99138	177 37.86991	06 8678412
Whangara B20	-38 30.06966	178 12.27602	06 8622822
Whangara B5	-38 32.78915	178 13.82971	06 8622863
Wharekaka Farm	-38 19.76050	178 17.31541	06 8684565
Wharekopae Station	-38 34.38527	177 34.24358	07 3483100
Whareongaonga Trust	-38 49.54189	177 53.05621	06 8679799
White Pines	-38 32.57235	178 11.83268	06 8622607
Wickham Hill	-38 32.84952	177 43.28464	06 8639866
Willowbank	-38 32.71457	177 54.91820	06 8625506
Windermere Station	-38 30.96496	177 55.80527	06 8625617
Windy Hill Deer Farm	-38 26.64727	177 31.94176	06 8624545
Woodstock	-38 43.55030	177 52.69065	06 8628743
WS & CM Trafford P/ship	-38 25.86802	177 54.54846	06 8623960
Zealandia Orchards	-38 40.12005	177 55.23713	06 8628823

ELEV 51

NZJG

GISBORNE HOSPITAL

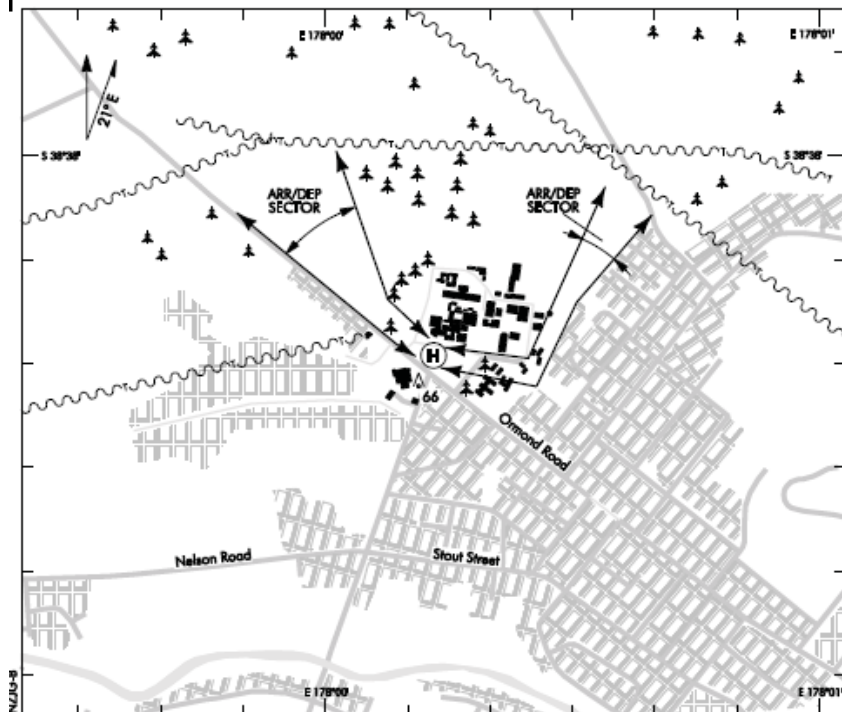
NON-CERTIFICATED

HELIPORT

GISBORNE TOWER: 127.3 118.2

GISBORNE ATIS: 126.4

UNATTENDED: 127.3



Heliport located within Gisborne CTR/D.

All flights to the helipad are to conform with CAR 91.127(d)(3). The preferred ARR/DEP routes for non-performance class 1 helicopters is depicted.

CAUTION: Unlit 66ft high cellphone tower approx 90m southwest of TLOF.

Noise abatement — all aircraft should use the arrival/departure tracks as portrayed. These tracks (which involve the use of a small dog-leg) take into account local noise abatement and safety considerations.

S 38 38 19 E 178 00 13*

Effective: 17 NOV 11**GISBORNE HOSPITAL
HELIPORT**

© Civil Aviation Authority

Non-Certificated Helipad 1.9NM NNW of
Gisborne city centre
NZJG

GISBORNE HOSPITAL OPERATIONAL DATA

FATO/TLOF

	SIZE	SFC	STRENGTH	MARKINGS
FATO	28m x 28m	B		
TLOF	12m x 12m	Conc		Standard

LIGHTING

Perimeter: Standard amber and blue activated on notification of inbound flight

Floodlighting: Permanently activated during hours of darkness

FACILITIES

Security personnel are deployed at the helipad to manage public and vehicle access at all times prior to helicopter arrival until after departure

SUPPLEMENTARY

Operator: Tairāwhiti District Health Board, Private Bag 7001, Gisborne 4040
Tel (06) 869 0500 Fax (06) 869 0534

Gisborne Hospital helipad is available for limited use subject to prior approval of the Operator.

The Emergency Department and/or helipad safety personnel require reasonable prior notification of all landings.

All emergency landing notifications are to be made to Gisborne Hospital Emergency Department using the St John Ambulance radio telephone or by telephoning the hospital switchboard on Tel (06) 869 0500 to ensure that they are prepared to receive the patient/s and instigate emergency care.

All other landing notifications including medical retrievals are to be made to the hospital switchboard by telephone (06) 869 0500 to ensure that helipad safety personnel are available.

Hospital orderlies are available to assist with transportation of patients and medical equipment between the helicopter and the hospital.

Effective: 17 NOV 11

© Civil Aviation Authority

**GISBORNE HOSPITAL
OPERATIONAL DATA**

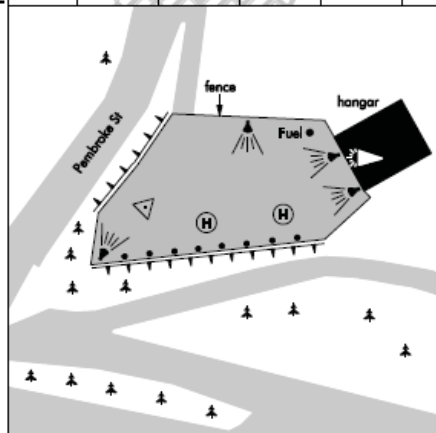
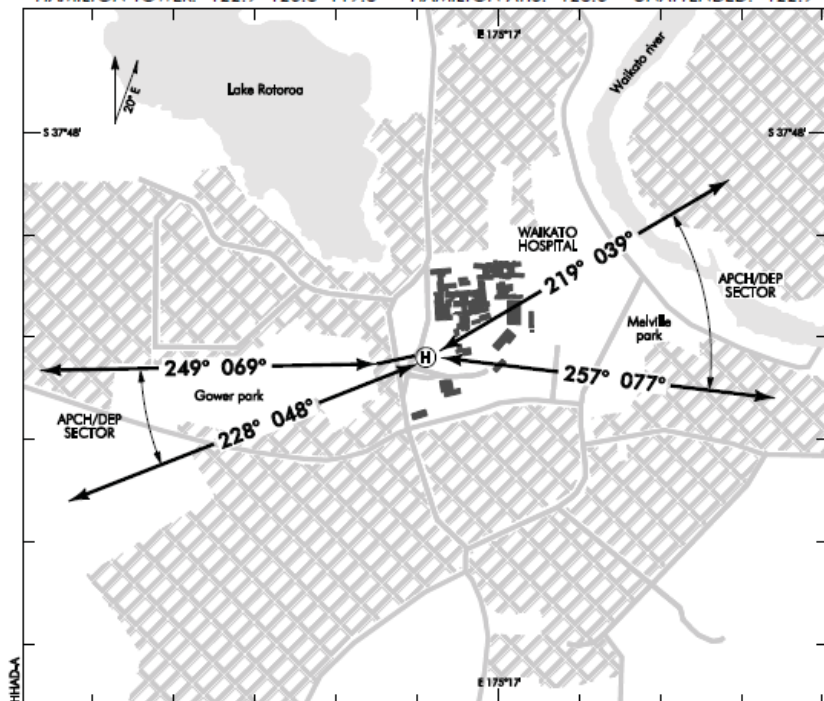
ELEV 200

NZHH

NON-CERTIFICATED

WAIKATO HOSPITAL**HELIPORT**

HAMILTON TOWER: 122.9 126.8 119.8 HAMILTON ATIS: 128.6 UNATTENDED: 122.9



1. Heliport located within Hamilton CTR/D in City Sector.
2. Remain clear of populous areas.
3. Preferred APCH/DEP to/from the west.
4. If hangar door is open make final approach to hold initially at western end.

S 37 48 22 E 175 16 51*

Effective: 28 JUL 11

© Civil Aviation Authority

**WAIKATO HOSPITAL
HELIPORT**

FATO/TLOF

	SIZE	SFC	STRENGTH	MARKINGS
FATO	26m x 50m	B	6000kg	Standard
TLOF*	5.6m	B	6000kg	Standard

*Applies to both TLOFs

Maximum helicopter size 17.5m overall length.

LIGHTING

PAL 124.0: Non-standard operation. Transmit 4 pulses within 5 seconds.

TLOF: Amber and blue

WDI: On hangar roof

Floodlighting: From hangar and FATO perimeter

FACILITIES

Fuel: Jet A1 by prior arrangement

SUPPLEMENTARY

Operator: Search and Rescue Services Ltd, PO Box 9308, Hamilton
Tel (07) 839 8869 or 027 492 4305

Available H24 for air ambulance helicopters only unless prior arrangement with the operator.

Contact Waikato Hospital (Tel 07 839 8899) with 15 min ETA.

ELEV 49

NZJH

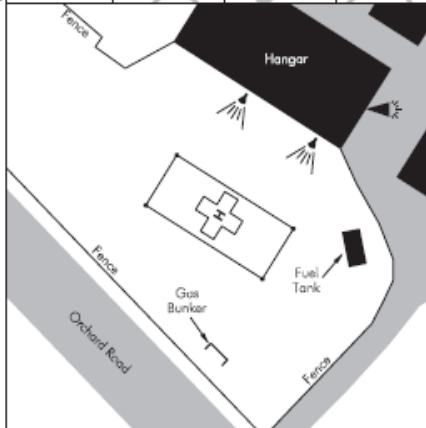
NON-CERTIFICATED

HASTINGS HOSPITAL**HELIPORT**

UNATTENDED: 125.8



Changes from 20 NOV 08: Editorial.



- Heliport located adjacent to Napier CTR/D
- Hangar sited immediately NE of heliport
- Make all take-offs and approaches as steep as possible due to nearby residential areas
- Approach and departure over adjacent school ground is not allowed during school hours
- CAUTION: Nearby fuel tank and gas bunker
- Unless advised otherwise, park on eastern side of helipad
- All operations are to comply with Civil Aviation Rule 91.127(d)(3) or the provisions and limitations of Section 13A of the Civil Aviation Act 1990

S 39 37 48 E 176 49 26*

Effective: 28 JUL 11

© Civil Aviation Authority

HASTINGS HOSPITAL**HELIPORT**

Non-Certificated Heliport

**HASTINGS HOSPITAL
OPERATIONAL DATA**

NZJH

FATO/TLOF

	SIZE	SFC	STRENGTH	MARKINGS
FATO	28m x 28m	Gr		
TLOF	25m x 12m	Asph		Standard

Maximum helicopter size 15m overall length.

LIGHTING

Four blue perimeter lights and floodlighting.

Lit WDI located on eastern side of hangar roof.

FACILITIES

Jet A1 fuel available via operator.

Telephone, toilets.

SUPPLEMENTARY

Operator: Hawkes Bay Helicopter Rescue Trust, PO Box 402, Hastings
 Tel (06) 878 1630 (Administration), (06) 878 1633 (Hangar),
 Fax (06) 878 1634, Mobile (027) 442 6524 or (027) 492 7277 (H24)

Hospital orderlies are available to assist with transportation of patients and medical equipment between the helicopter and hospital, either by making a radio call to the Emergency Department via ambulance radio (R40) or by contacting the Emergency Department Shift Coordinator on 06 878 8109 Ext 2661. Advise requirements and ETA at helipad to the Shift Coordinator at least 15 minutes prior.

Available only with prior permission of the operator.

Effective: 28 JUL 11

ELEV 979

NZJO

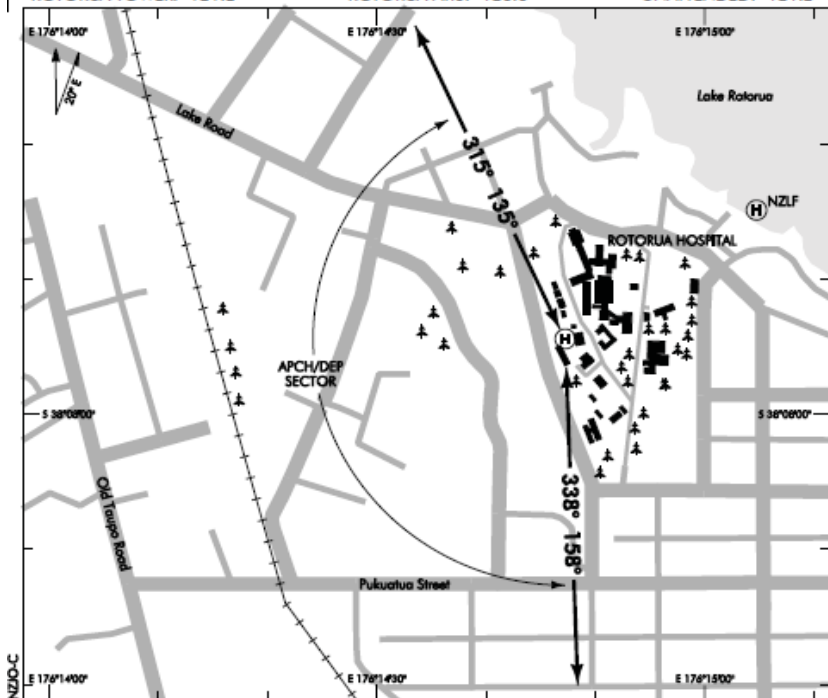
NON-CERTIFICATED

ROTORUA HOSPITAL**HELIPORT**

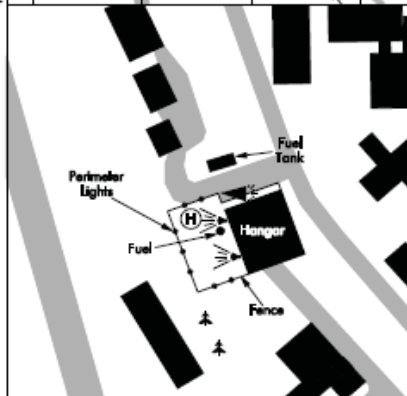
ROTORUA TOWER: 121.2

ROTORUA ATIS: 128.8

UNATTENDED: 121.2



Changes from 20 NOV 08: APCH/DEP: Seab; performance test.



Heliport located within Rotorua CTR/D.
 Noise abatement — do not overfly hospital.
 For Non-Performance Class 1 helicopters,
 specific procedures apply — contact the
 BayTrust Rescue Pilot for details.

S 38 07 55 E 176 14 48*

Effective: 18 NOV 10

© Civil Aviation Authority

**ROTORUA HOSPITAL
HELIPORT**

Non-Certificated Heliport on N side of
Rotorua city
NZJO

ROTORUA HOSPITAL OPERATIONAL DATA

FATO/TLOF

	SIZE	SFC	STRENGTH	MARKINGS
FATO	14m x 32m			
TLOF	13m x 13m	Conc		Standard

LIGHTING

FATO: Floodlighting
 TLOF: Perimeter — orange/blue. Lights remain on from ECT to MCT.
 WDI: Light linked to perimeter lighting

FACILITIES

Nil

SUPPLEMENTARY

Operator: Lakeland Health Ltd, Rotorua Hospital, Private Bag 3023, Rotorua.
 Tel (07) 349 7946 Fax (07) 349 7942

Available for limited use subject to the prior agreement of the operator:

Prior to landing contact BayTrust Rescue, Tel (027) 499 9117 — duty pilot (H24).

Visiting aircraft to park on the TLOF area.

A second aircraft may park in front of the hangar doors but the pilot is to remain with the aircraft and shall be ready to move the aircraft clear for the BayTrust Rescue helicopter.

Effective: 18 NOV 10

© Civil Aviation Authority

**ROTORUA HOSPITAL
OPERATIONAL DATA**

ELEV 40

NZJA

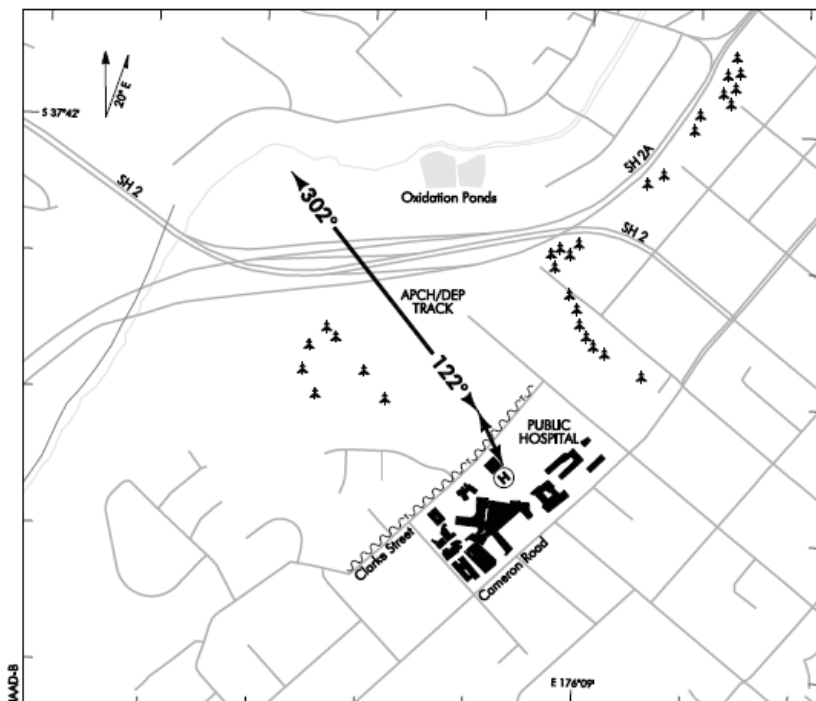
NON-CERTIFICATED

TAURANGA HOSPITAL**HELIPORT**

TAURANGA TOWER: 118.3 123.4 129.2

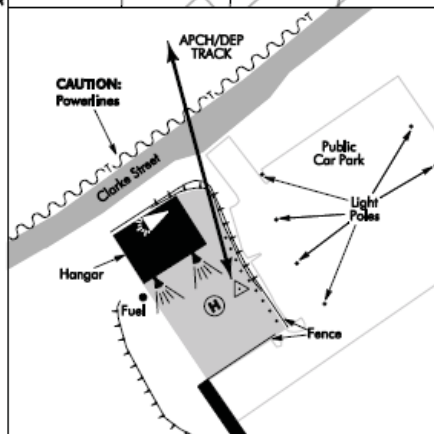
TAURANGA ATIS: 126.6

UNATTENDED: 118.3



JMD-B

Changes from 23 SEP 10: Addition of TWR FREQ.



Heliport located within Tauranga CTR/D.

CAUTION: High tree/shrub-covered cliff to SE of FATO.

Powerlines on NW side of Clarke St to immediate NW of helipad. Light poles in carpark to immediate east of FATO.

All aircraft should use the arrival/departure tracks as portrayed. These tracks (which involve the use of a small dog-leg) take into account local noise abatement and safety considerations.

Departure — aircraft should track towards Mt Maunganui (Mauao) until passing Clarke St then turn NW to track 302°M. Flight directly over the public carpark not permitted by non-performance class 1 helicopters.

S 37 42 25 E 176 08 53

Effective: 10 FEB 11**TAURANGA HOSPITAL
HELIPORT**

© Civil Aviation Authority

Non-Certificated Heliport 2NM SSW of
City Centre
NZJA

TAURANGA HOSPITAL
OPERATIONAL DATA

FATO/TLOF

	SIZE	SFC	STRENGTH	MARKINGS
FATO	30m x 40m	B		Nil
TLOF	5.6m x 5.6m	B		Nil

Maximum helicopter size 16m overall length.

LIGHTING

PAL 124.0: Standard Operation — transmit 5 pulses within 3 seconds
FATO: Perimeter: blue and yellow
TLOF: Floodlighting
WDI: On hangar roof

FACILITIES

Fuel: Jet A1 by arrangement.

SUPPLEMENTARY

Operator: Pacific Health Limited, Private Bag 12024, Tauranga.
Tel (07) 579 8000 Fax (07) 579 8027

Available for limited use subject to the prior agreement of the operator.

Phone the base rescue helicopter trust Tel (0274) 509 789 or (07) 579 9898 for details of approved arrival-departure procedures.

Effective: 23 SEP 10

© Civil Aviation Authority

TAURANGA HOSPITAL
OPERATIONAL DATA

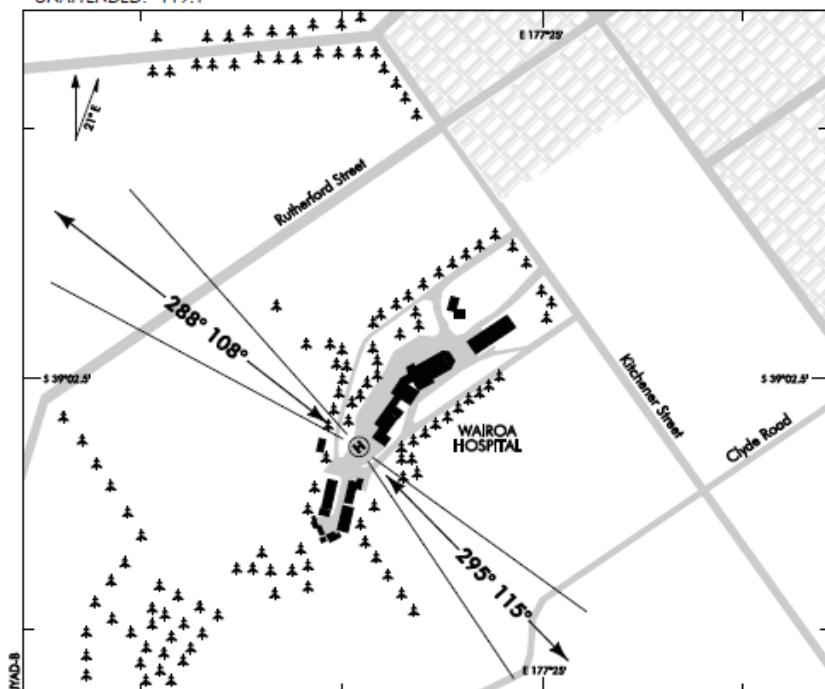
ELEV 59

NZJY

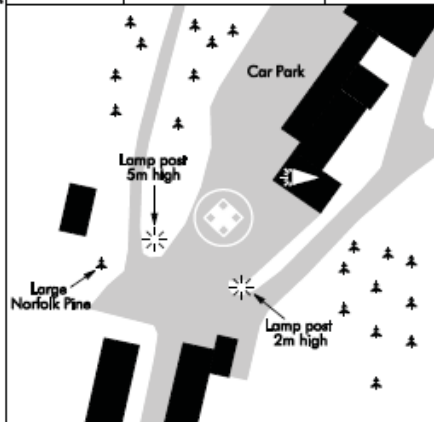
NON-CERTIFICATED

WAIROA HOSPITAL**HELIPORT**

UNATTENDED: 119.1



Changes from 4 SEP 03: Couriers, buildings and obstacles updated.



- Obstructions: Buildings 14m NE, 34m SW of FATO.
- CAUTION: Large norfolk pine located 35m SW of helipad near western approach and departure path.
- CAUTION: Other aircraft as heliport located 1.5NM to the south of Wairoa AD and within the instrument approach sector.

S 39 02 33 E 177 24 51*

Effective: 17 NOV 11

© Civil Aviation Authority

**WAIROA HOSPITAL
HELIPORT**

Non-Certificated Heliport 0.8NM SSW of
Wairoa Bridge
NZJY

WAIROA HOSPITAL OPERATIONAL DATA

FATO/TLOF

	SIZE	SFC	STRENGTH	MARKINGS
FATO	Diameter 19.5m	B	4500	Standard
TLOF	5.5m x 5.5m			Hospital

Maximum helicopter size 13m overall length.

LIGHTING

FATO: Floodlighting

FACILITIES

Nil

SUPPLEMENTARY

Operator: Wairoa Care Hawkes Bay, Wairoa Hospital, PO Box 84, Wairoa.
Tel (06) 838 7099 Fax (06) 838 8802

Available for limited use subject to the prior agreement of the operator.

Due to public access through heliport, barriers are required to be erected by hospital staff to isolate public access during times of operation. Phone Wairoa Hospital on Tel (06) 838 7099 at least 15 min prior to landing and ask that the barriers be put in place. Note that outside of normal hours, hospital staff will leave the barriers permanently erected.

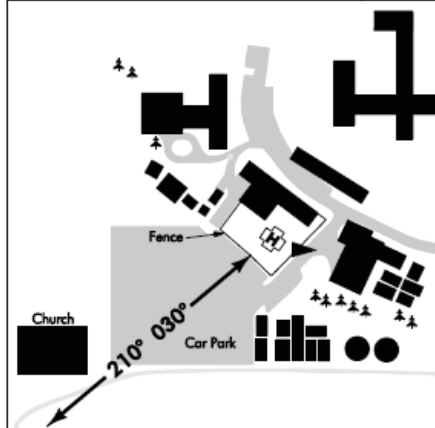
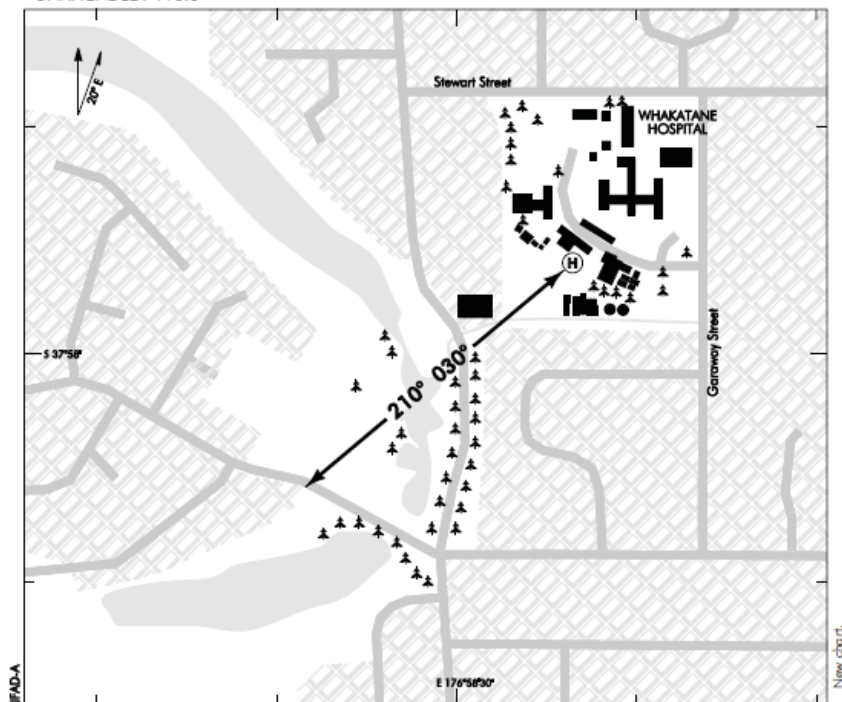
ELEV 23

NZJF

NON-CERTIFICATED

WHAKATANE HOSPITAL**HELIPORT**

UNATTENDED: 118.6



1. All aircraft should use Arrival/Departure track as portrayed.
2. **CAUTION:** Boiler stacks (chimneys) above Engineering building to north of helipad.
3. **CAUTION:** Hospital undergoing reconstruction. Construction site to north of helipad. Large mobile cranes in use FEB 2012 to DEC 2013.

S 37 57 56 E 176 58 36

WHAKATANE HOSPITAL

FATO/TLOF

	SIZE	SFC	STRENGTH	MARKINGS
FATO	32 x 32m	B		Nil
TLOF	11 x 11m	B		Hospital

LIGHTING

PAL 124.0: Standard operation. Transmit 5 pulses in 3 seconds

FATO perimeter: Blue and yellow

WDI

FACILITIES

Nil off-pad parking available for visiting helicopters

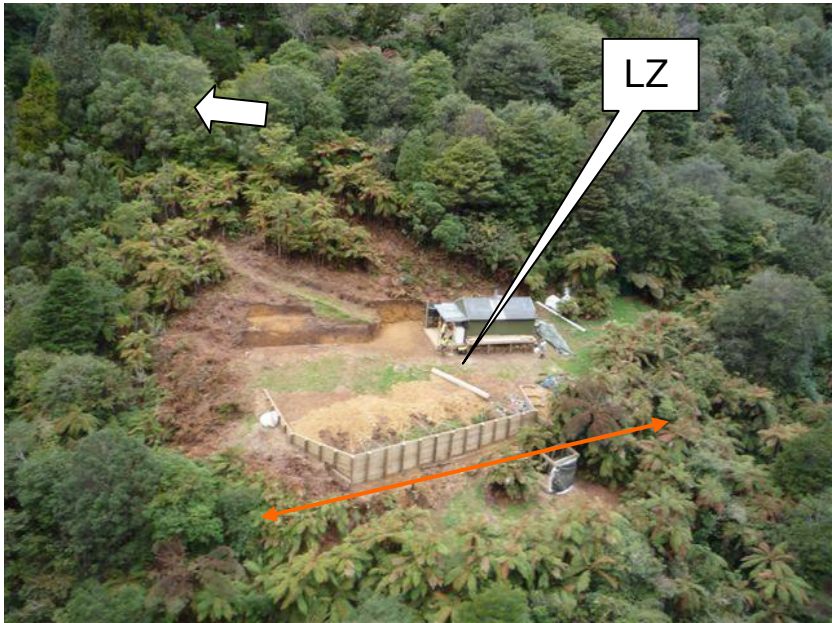
Nil fuel

SUPPLEMENTARYOperator: Bay of Plenty District Health Board, Whakatane Hospital
Tel (07) 579 8942All notices to: General Manager Property Services
Private Bag 12024
Tauranga 3143

Available for limited use subject to prior agreement of the operator.

Effective: 9 FEB 12

Pakihi Track Hut



S38° 10.199 E177° 28. 032

Coms:

Twr: 125.5

Phone: N/A

AMB: Ch 20

Atis: N/A

Lighting: None

Approach/Dep:

Up or down river

Elev 250

Special Notes:

Located on the Motu cycle way. Limited places to land on track so land at hut and walk to patient if required.

Nearest Fuel: WK Airport

Nuhaka School



S39° 02.469' E177° 44.202'

Twr: 119.1	Coms:
Atis:	Phone:
	Lighting:
Approach/Dep:	
Best approach	Elev: 270

Special Notes:

Nearest Fuel: NZWO

Ruatoria Fire



S37° 53. 250' E178° 19. 250'

Coms:

AMB: Ch 21

Phone: Police 111

Atis:

Lighting: Nil

Approach/Dep:

Best approach 110° / 270°

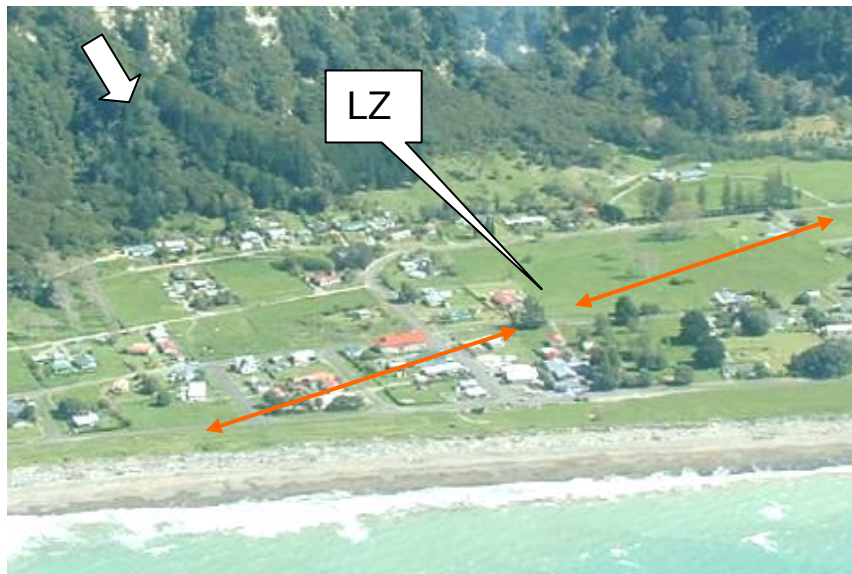
Elev: 50

Special Notes:

Tower 3nm NE of township
Ruatoria aerodrome 3nm West
Turbulence in Southeast winds

Nearest Fuel: Ruatoria Cache

Te Araroa Medical Centre



S37° 38. 180' E178° 22. 000'

Coms:

AMB: Ch 21

Phone: Police 111

Atis:

Lighting: Nil

Approach/Dep:

Best approach 110° / 270°

Elev: 50

Special Notes:

Turbulence in Southeast winds

Motel 2nm west if turbulence severe.

Radio communications unreliable below 500' AGL

Horses often in vicinity.

Nearest Fuel: Ruatoria Cache

Te Kaha Medical Centre



S37° 44.723' E177° 41.018'

AMB: Ch 30

Coms:

Phone: Police 111

Atis:

Lighting: Nil

Approach/Dep:

Best approach 110° / 270°

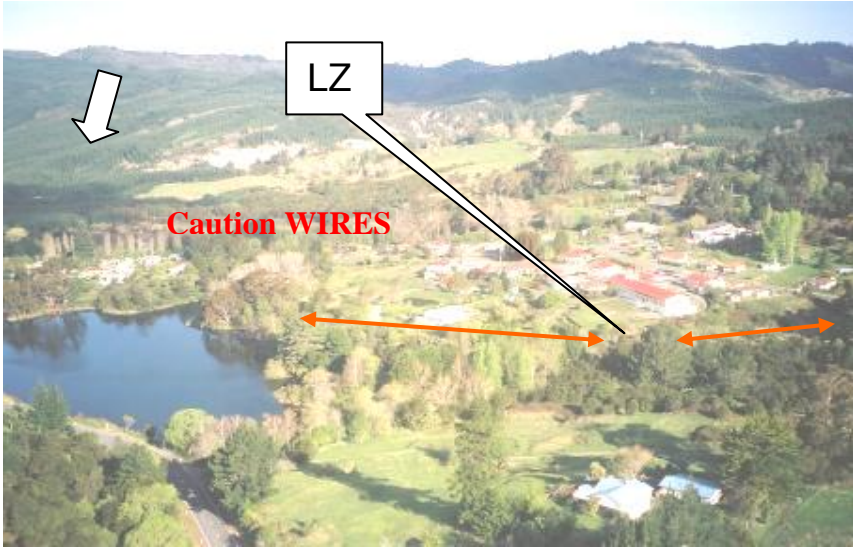
Elev: 50

Special Notes:

Turbulence in Southeast winds
Horses in vicinity.

Nearest Fuel: WK Airport

Te Puia Springs Medical Centre



S38° 03. 160' E178° 18. 160'

AMB: Ch 23	Coms: Phone: 06 8646803 / 8646843
Atis: buildings	Lighting: Floodlights On

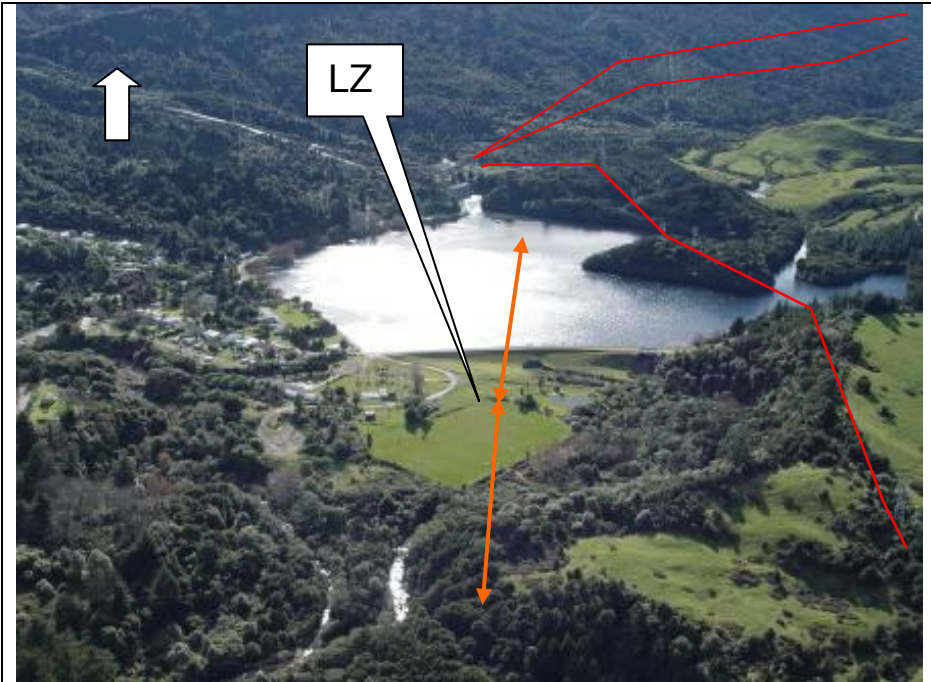
Approach/Dep:
Best approach 110° / 270°

Elev: 50

Special Notes:
Turbulence in Southwest winds

Nearest Fuel: Ruatoria Cache

Tuai RALLPAD



S38° 48.567' E177° 08.575'

Coms:

Twr: 119.1

Phone:

Atis:

Lighting: Pal 124.00 4 pulses, 3sec's

Approach/Dep:

Either over lake or 300⁰ parallel with HT lines

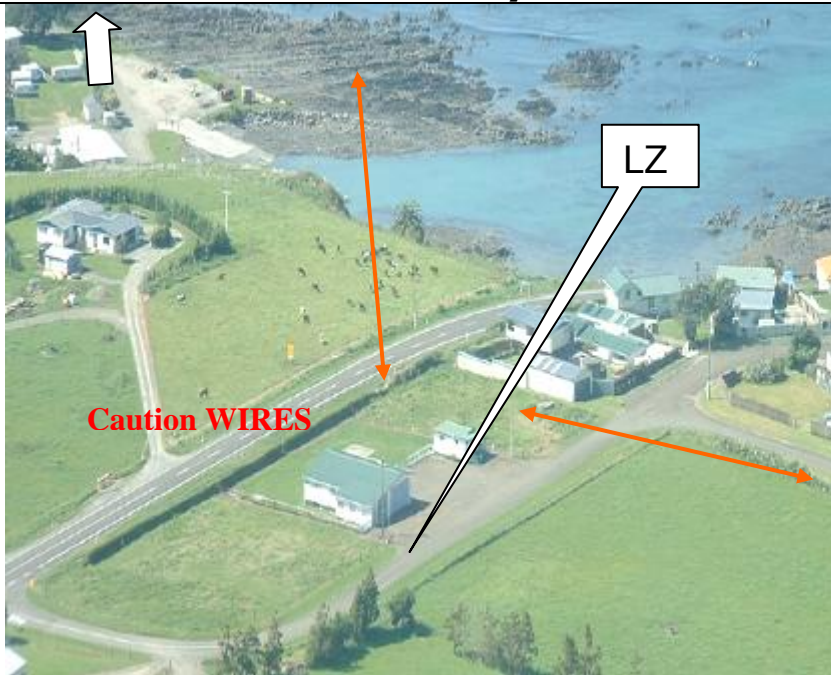
Elev: 820

Special Notes:

Many High tension lines running to the power station, to the north and east of lake.

Nearest Fuel: NZWO 14nm

Waihau Bay Fire



S37° 36. 970' E177° 54. 351'

AMB: Ch 20

Coms:
Phone:

Atis:

Lighting: Nil

Approach/Dep:
Best approach 110° / 270°

Elevation: 50

Nearest Fuel: Ruatoria Cache

MAHIA RALLPAD



S39° 05. 156' E177° 52. 331'

COMMUNICATIONS

Trw: 125.6

Phone: N/A

Atis: N/A

Lighting: Pal 124.00 4 pulses, 3sec's

APPROACH/DEPARTURE

Parallel with beach

Elevation: 10'

SPECIAL NOTES/SOP

1. Land in car park next to Mahia Fishing Club, or on grass if preferred.

Nearest Fuel: NZWO 21nm or NZGS 28nm

Night Operations Checklist

PRE TAKE OFF

- **Fuel** – Sufficient, check & note
- **Radios/Nav Aids** – Selected
- **GPS** – Set
- **RadAlt** – Set 1000ft
- **A/H's** – Erect & set
- **HSI/DI** – Align
- **Heading Bug** – Set heading
- **Caution Lights** – Out
- **T's & P's** – Normal
- **Lights** – Cabin, Landing, Nightsun, Night Scanner
- **Intentions** – Brief crew
- **Flight Following** – Contact
- **Passengers/Doors** – Secure
- **Inadvertent IMC** – Brief & approach plates
- **MSA** – Check
- **Departure Time** – Note
- **NVG** – On Goggles
- **Lift-off** – Cleared

AFTER TAKEOFF

- **Landing Lights** – Off
- **Nightsun/Night Scanner** – on
- **NVG's** – On
- **WX/Visibility** – Review
- **Climb** – Safe cruise altitude

CRUISE

- **Situational Awareness** – maintain, CRM
- **Scan** – Traffic/NVG's
- **Route/Track** – Revise
- **MSA** – Revise/1000ft AGL
- **Radios/Nav Aids** – Check
- **T's & P's** – Check
- **AMP's** – Check
- **Fuel** – Check
- **Weather** – Review
- **IIMC** – Revise
- **Flight Following** – Update

APPROACH

- **ATIS/QNH** – Obtain & select
- **Nav aids** – Select
- **Approach** – Intentions, brief
- **Clearance** – Obtain
- **Destination Lighting** – Activate
- **Minimum Descent Altitude** – decide/declare
- **T's & P's** – Check
- **Ground Comms** – Establish
- **Landing/Search Lights** – On
- **Reconnaissance** – Carry out
- **Hazards** – Check & Note

AFTER LANDING

- **Lights** – OFF
- **Time** – Note
- **Flight Following** – Update
- **Fuel** – Check/sufficient return

INADVERTENT IMC

The 4 "C's" Rule for IIMC

- **Control** the helicopter & revert to instrument flight immediately, note altitude, airspeed and heading.
- **Climb** to MSA or maintain altitude to safely clear surrounding terrain.
- **Course** – carryout a rate one turn onto the reciprocal heading and maintain instrument flight until VMC.
- **Communicate** – contact nearest ATS or FISCOM and declare a Mayday & advise intentions.

